



VOID

Hear. Feel. Connect.





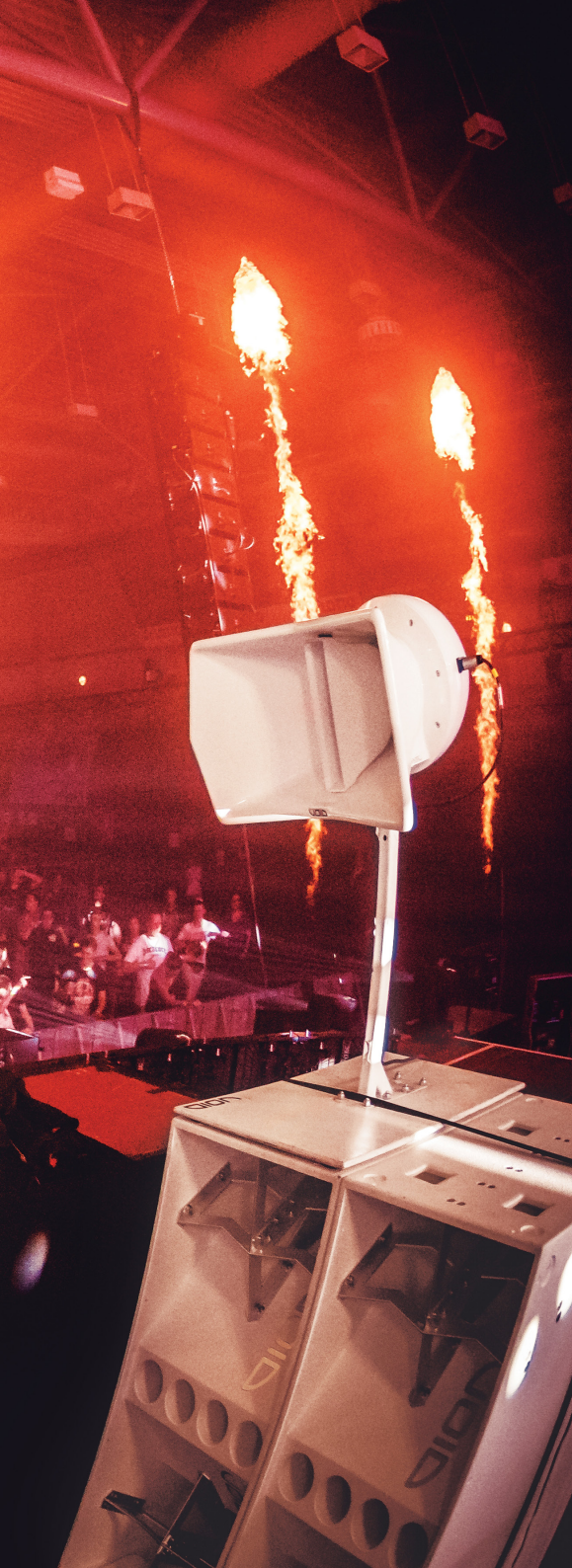
# Hear. Feel. Connect.

We pursue the future of sound through obsessive technical innovation and extraordinary design aesthetics. Our products create the opportunity to move people through unforgettable, immersive sound.









# Contents

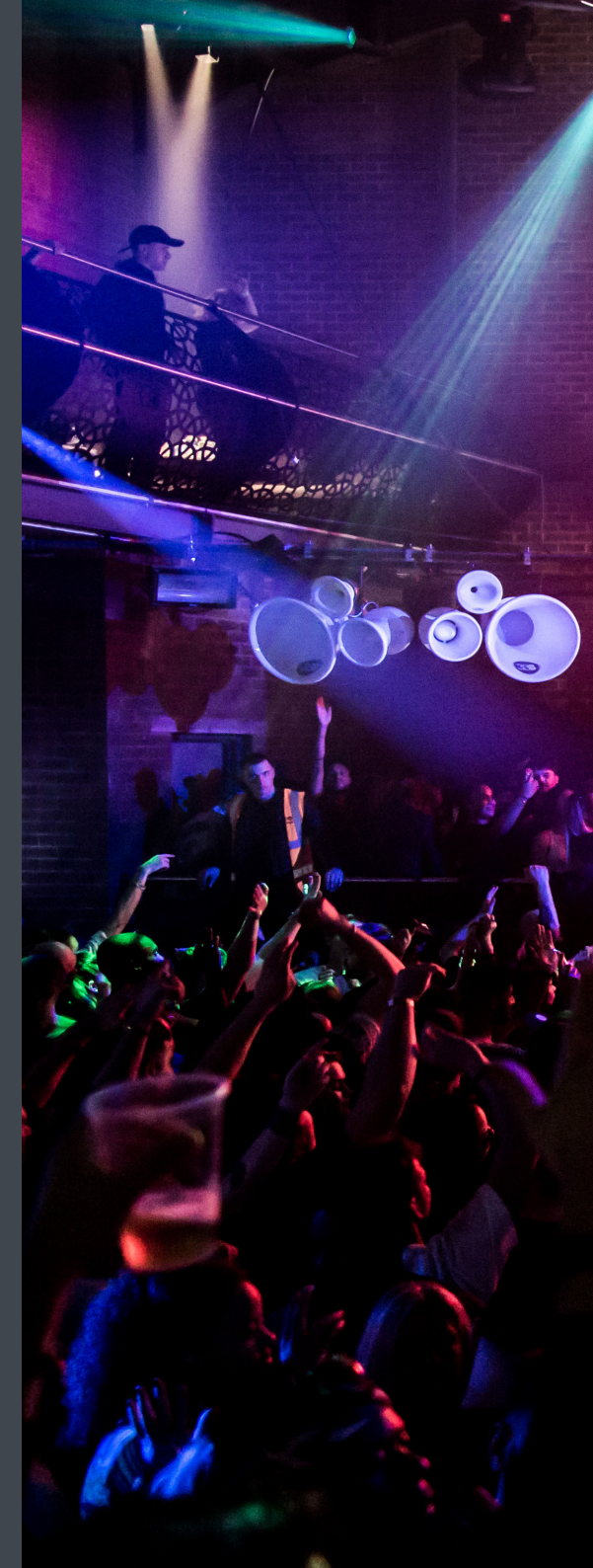
<b>Our Story</b>	<b>4</b>
<b>Product Ranges</b>	<b>6</b>
Cyclone	8
Venu	12
Indigo	18
Cirrus	22
Air Series	24
Nexus	30
Incubus	34
Arcline	38
Bias	44
Inca	48
<b>Colour Customisation</b>	<b>50</b>
<b>Case Studies</b>	<b>52</b>
<b>Contact</b>	<b>60</b>



# Our Story

Void Acoustic's Creative Director, Rog Mogale, and Managing Director, Alex Skan, originally met in the '90s. Both avid music fans with a passion for sound system design, their paths had crossed at numerous music events over the years. In 2002, the pair decided to join forces and set out to form a manufacturing company that would create a unique catalogue of high-end products like nothing else available in the audio market. While great sounding loudspeakers already existed, they all looked the same. Rog and Alex saw a gap in the market to design loudspeakers with a distinctive aesthetic appeal that equally matched the highest quality of sound.

From humble beginnings, Void has come to be a globally recognised professional audio brand. The signature high-gloss red fibreglass products are distinctly recognisable as Void and sought-after by iconic venue owners and event organisers worldwide. Customers also benefit from the option to request any RAL colour of their choosing to match their interior. The result is a sound system that can atmospherically and visually enhance any venue.













# Product Ranges

## SOUND SYSTEMS AS ART FORMS

Void Acoustics' comprehensive range of products have become world-renowned for their sonic perfection, reliability and revolutionary looks. Prominent installations include many of the most prestigious nightclubs, hotels, restaurants and venues around the world. Void is proud to be at the forefront of aural design, incorporating ground-breaking technological advances with visual styling that harmoniously complements your surroundings.









# Cyclone Series

Exposure to the elements of sound

## APPLICATIONS

Beach Bars & Poolside | Gyms/Fitness | Residential |  
Restaurants & Cafes | Hotels & Resorts

## OVERVIEW

The beautifully sculpted Cyclone series utilises a combination of marine-grade stainless, aluminium alloy hardware and a UV-stabilised finish to ensure every Cyclone product is durable and robust in outdoor environments that involve exposure to the elements. With its compact dimensions, IP-55 rating and optional colour customisation, the Cyclone Series provides the ultimate audio solution for luxury destinations and spaces.

[VIEW THE RANGE](#)





## Cyclone 4

Supplying exceptional sound quality in an ultra-compact IP-55 rated enclosure, Cyclone 4 is the most compact loudspeaker within the range and contains a single 4" LF (Low Frequency) transducer with a 0.75" soft dome HF (High Frequency) tweeter. A weather-protected casing, UV resilient paint and marine grade aluminium bracket make it a perfect audio solution for all-weather applications.

### SPECIFICATIONS

**Frequency response:** 83 Hz - 20 kHz  $\pm 3$  dB

**Nominal impedance:** 16  $\Omega$

**Power handling:** 130 W AES

**Maximum output:** 102 dB cont, 108 dB peak

**Driver configuration:**

1 x 4" LF, 1 x 0.75" soft dome HF tweeter

**Dispersion:** 70°H x 70°V

**Weight:** 1.3 kg (2.7 lbs)

**IP rating**<sup>3</sup>: IP-55



## Cyclone 8

The Cyclone 8 embraces an innovative design that is easy to install. The condensed form reinforces efficiency and ease of use without compromising on audio fidelity. While state-of-the-art porting minimises turbulent noise, maximising LF performance.

### SPECIFICATIONS

**Frequency response:** 70 Hz - 20 kHz  $\pm 3$  dB

**Nominal impedance:** 8  $\Omega$

**Power handling**<sup>2</sup>: 200 W AES

**Maximum output**<sup>3</sup>: 117 dB cont, 123 dB peak

**Dispersion:** 90°H x 90°V

**Weight:** 14 kg (31 lbs)

**IP rating:** IP-55 (BS EN 60529:1992 +A2:2013)



## Cyclone 55

Cyclone 55 offers elevated levels of fidelity and definition from an ultra-compact and visually appealing format. Its weather-protected package is perfectly suited to coastal outdoor applications. With a dedicated bracket, the Cyclone 55 can be installed quickly and securely, and its wide range of adjustment allows the loudspeaker's wide dispersion pattern to be accurately aimed at large audience areas using the least number of loudspeakers.

### SPECIFICATIONS

**Frequency response:** 70 Hz - 23 kHz  $\pm 3$  dB

**Nominal impedance:** 16  $\Omega$

**Power handling**<sup>2</sup>: 120 W AES

**Maximum output**<sup>3</sup>: 112 dB cont, 118 dB peak

**Dispersion:** 110°H x 70°V

**Weight:** 3.2 kg (7.1 lbs)

**IP rating:** IP-55 (BS EN 60529:1992 +A2:2013)



## Cyclone 10

Providing full range sound for venues that require hi fidelity audio. Its IP-55 rating makes the Cyclone 10 suitable for both interior and exterior use. The beautifully sculpted fibreglass enclosure is paired with a smooth cellulose finish, creating years of great sound and trouble-free outdoor use.

### SPECIFICATIONS

**Frequency response:** 52 Hz - 22 kHz  $\pm 3$  dB

**Nominal impedance:** 8  $\Omega$

**Power handling**<sup>2</sup>: 350 W AES

**Maximum output**<sup>3</sup>: 122 dB cont, 128 dB peak

**Dispersion:** 90°H x 60°V

**Weight:** 14.5 kg (32 lbs)

**IP rating:** IP-55 (BS EN 60529:1992 +A2:2013)



## Cyclone 208

A compact subwoofer designed for pairing with Cyclone 4 or Cyclone 55 to create a high-output and stylish sound system. An IP-55 rating and an integrated polished stainless-steel bracket, allow for all-weather applications in various environments. Featuring dual 8" low frequency transducers, which combined with its low resonance fibreglass enclosure results in exceptional output and extension capabilities. Perfect for bars, restaurants, beach clubs, retail and various other applications.

### SPECIFICATIONS

**Frequency response:** 42 Hz - 120 Hz  $\pm 3$  dB

**Nominal impedance:** 8  $\Omega$

**Power handling**<sup>2</sup>: 300 W

**Maximum output**<sup>3</sup>: 119 dB Cont, 125 dB Peak

**Weight:** 22 kg (48.5 lbs)



## Cyclone Bass

The Cyclone bass brings a new level of aesthetic to high profile outside applications. Fitted with a single high powered 12" driver, the design is suitable for beach bars, restaurants, theme parks and any location where a corrosive atmosphere exists. Available in a wide range of custom colours the design also makes use of phoenix connectors with link out capability for ease of installation.

### SPECIFICATIONS

**Frequency response:** 40 Hz - 160 Hz -3 dB

**Crossover points:** 80 Hz - 160 Hz Active

**Nominal impedance:** 8  $\Omega$

**Power handling**<sup>2</sup>: 600 W AES

**Maximum output**<sup>3</sup>: 124 dB cont, 130 dB peak

**Weight:** 33.5 kg (73.9 lbs)

**IP rating:** IP-55 (BS EN 60529:1992 +A2:2013)

# Venu Series

Contemporary look with sleek aesthetics

## APPLICATIONS

Bars & Clubs | Hotels & Resorts | Houses of Worship |  
Restaurants & Cafes | Gyms/Fitness | Education

## OVERVIEW

Relied on as an audio installation staple for the past five years, the Venu V2 Series provides a contemporary alternative to the Void product range. These high-performance loudspeakers now boast a smooth, high-end finish that aligns with Void's coveted and stylish fibreglass range. Across the whole Venu V2 series, each product now features a SpeakON™ socket for ease of use and quick deployment in touring

[VIEW THE RANGE](#)









## Venu 6

Configured to offer everything you could ask from an installation loudspeaker; the Venu 6 is ingeniously designed for functionality and aesthetics. SpeakON™ and Phoenix connectors deliver a quick and reliable hook up while colour customisation provides the chance to own a bespoke product that will compliment any location. The Venu 6 is favoured for use in pro home audio setups, restaurants, bars and retail spaces.

### SPECIFICATIONS

**Frequency response:** 75 Hz - 19 kHz  $\pm 3$  dB

**Crossover points:** 2.4 kHz passive

**Nominal impedance:** 8  $\Omega$

**Power handling**<sup>2</sup>: 200 W AES

**Maximum output**<sup>3</sup>: 118 dB cont, 124 dB peak

**Weight:** 9.5 kg (20.9 lbs)



## Venu 8

Venu 8 V2 provides unparalleled levels of versatility, ensuring every space can access high-quality audio. Product redesigns have provided enhancements in both functionality and cosmetic appearance. The Easy Hang wall brackets support both vertical and horizontal mounting, while the rotatable high frequency horn allows for correct dispersion in either position. The Venu 8 V2 is ideal for supplying fill in larger restaurants, bars, and nightclubs.

### SPECIFICATIONS

**Frequency response:** 70 Hz - 20 kHz  $\pm 3$  dB

**Crossover points:** 2.3 kHz passive

**Nominal impedance:** 8  $\Omega$

**Power handling**<sup>2</sup>: 300 W AES

**Maximum output**<sup>3</sup>: 121 dB cont, 127 dB peak

**Weight:** 12 kg (26.5 lbs)



## Venu 10

Embracing enhanced functionality and aesthetics with high-quality performance, the Venu 10 V2 features a compact form and hardwearing textured polyurethane finish, reinforcing its versatility. The optional top hat allows for mounting in touring applications, while the Dual SpeakON™ and Phoenix connectors are provided with link through for fast and efficient hook ups. Suited for larger venues such as restaurants, bars and nightclubs.

### SPECIFICATIONS

**Frequency response:** 65 Hz - 20 kHz  $\pm 3$  dB

**Crossover points:** 2.1 kHz passive

**Nominal impedance:** 8  $\Omega$

**Power handling**<sup>2</sup>: 350 W AES

**Maximum output**<sup>3</sup>: 122 dB cont, 128 dB peak

**Weight:** 16 kg (35.3 lbs)



## Venu 12

Designed to deliver consistent high-fidelity audio, the Venu 12 V2 features enhancements in both technical functionality as well as a contemporary inspired stylistic re-vamp. Featuring a rotatable high-frequency horn for horizontal or vertical mounting and an electronic HF protection device to increase reliability. The V2 redesign has created a loudspeaker that is robust, versatile and efficient. Suited for smaller nightclubs or larger restaurants and bars.

### SPECIFICATIONS

**Frequency response:** 60 Hz - 20 kHz  $\pm 3$  dB

**Crossover points:** 2.1 kHz passive

**Nominal impedance:** 8  $\Omega$

**Power handling**<sup>2</sup>: 400 W AES

**Maximum output**<sup>3</sup>: 124 dB cont, 130 dB peak

**Weight:** 22 kg (48.5 lbs)



## Venu 15

Operating with a wide frequency response of 50 Hz - 20 kHz  $\pm 3$  dB, Venu 15 V2 is the largest loudspeaker within the range featuring a 1" high-frequency compression driver, and a 15" low-frequency transducer. Benefitting from the same enhancements as the rest of the Venu V2 series, the Venu 15 V2 is a loudspeaker which can deliver hi fidelity audio with functionality. Suitable as the main speaker system in small to medium sized spaces, including nightclubs, bars, and lounges.

### SPECIFICATIONS

**Frequency response:** 50 Hz - 20 kHz  $\pm 3$  dB

**Crossover points:** 2.1 kHz passive

**Nominal impedance:** 8  $\Omega$

**Power handling**<sup>2</sup>: 450 W AES

**Maximum output**<sup>3</sup>: 125 dB cont, 131 dB peak

**Weight:** 31 kg (68.3 lbs)



## Venu 112

Venu 112 V2 is the perfect subwoofer for venues looking to incorporate bass in an unobtrusive fashion. Specially designed to meet and exceed the demands of leading installation contractors around the world by delivering elevated levels of performance and versatility. Venu 112 V2 features SpeakON™ and Phoenix connectors with link outs for efficient hook-ups, alongside a recessed rear connector panel allowing for rear wall positioning.

### SPECIFICATIONS

**Frequency response:** 40 Hz - 160 Hz  $\pm 3$  dB

**Crossover points:** 80 Hz - 160 Hz active

**Nominal impedance:** 8  $\Omega$

**Power handling**<sup>2</sup>: 600 W AES

**Maximum output**<sup>3</sup>: 126 dB cont, 132 dB peak

**Weight:** 27 kg (59.5 lbs)



## Venu 115

Delivering exceptionally powerful bass from a modestly sized enclosure, Venu 115 V2 offers a frequency response of 38 Hz - 160 Hz  $\pm 3$  dB. Contemporary styling paired with considered functionality such as the recessed rear connector panel, SpeakON™ and Phoenix connectors with link throughs, result in flexible performance. Optimised for use in bars, clubs, lounges, hotels, and restaurants.

### SPECIFICATIONS

**Frequency response:** 38 Hz - 160 Hz  $\pm 3$  dB

**Crossover points:** 80 Hz - 160 Hz active

**Nominal impedance:** 8  $\Omega$

**Power handling<sup>2</sup>:** 500 W AES

**Maximum output<sup>3</sup>:** 123 dB cont, 129 dB peak

**Weight:** 35 kg (77.2 lbs)



## Venu 212

Designed with adaptability in mind, the Venu 212 V2 subwoofer has a solid reputation for delivering high output bass in bars, nightclubs, lounges, as well as hotels, restaurants and other luxury spaces. The subwoofer is reflex-loaded featuring two robust 12" high excursion transducers with 4" voice coils as well as a recessed rear connector panel. Venu 212 V2 provides consistent high impact bass that you can trust to deliver.

### SPECIFICATIONS

**Frequency response:** 34 Hz - 160 Hz  $\pm 3$  dB

**Crossover points:** 80 Hz - 160 Hz active

**Nominal impedance:** 4  $\Omega$

**Power handling<sup>2</sup>:** 1200 W AES

**Maximum output<sup>3</sup>:** 129 dB cont, 135 dB peak

**Weight:** 47.5 kg (104.7 lbs)



## Venu 215

Venu 215 V2 is a reflex-loaded dual 15" low-frequency loudspeaker with stylishly presentation. Ease of use is reinforced by the recessed connector panel as well as SpeakON™ and Phoenix connectors with link throughs for fast connections. The tough 15" high excursion transducers with 4" voice coils and a durable enclosure fortify the long-lasting nature of the Venu 215. An exemplary subwoofer for bars, nightclubs, lounges, hotels, and restaurants.

### SPECIFICATIONS

**Frequency response:** 38 Hz - 160 Hz  $\pm 3$  dB

**Crossover points:** 80 Hz - 160 Hz active

**Nominal impedance:** 4  $\Omega$

**Power handling<sup>2</sup>:** 1000 W AES

**Maximum output<sup>3</sup>:** 134 dB cont, 140 dB peak

**Weight:** 62.5 kg (137.8 lbs)





## Venu 208

Designed to meet the needs of the most challenging installation requirements, Venu 208 is a sonic solution for spaces requiring an ultra-compact low-frequency enclosure. Fitted with two 8" low-frequency drivers, the Venu 208's diminutive size makes no compromise on power and is ideal for low-frequency extension in distributed or background music systems. The recessed rear connector panel allows for rear wall positioning, while yoke bracket mounting options mean the Venu 208 can be mounted on ceilings or walls. Venu 208 is extremely adaptable and robust, with a 15mm multi-laminate birch plywood cabinet and multiple mounting options.

### SPECIFICATIONS

**Frequency response:** 42 Hz - 120 Hz  $\pm$  3 dB  
**Efficiency<sup>1</sup>:** 95 dB 1W/1m  
**Nominal impedance:** 8  $\Omega$   
**Power handling<sup>2</sup>:** 300 W  
**Maximum output<sup>3</sup>:** 125 dB  
**Weight:** 20 kg (44 lbs)



## Venu 208i

An ultra-compact self-powered double 8" subwoofer, capable of powering up to four mid-high enclosures, including Cyclone 4, Cyclone 55 and Indigo 6s. Incorporating all the key elements of the Venu V2 range in a compact and stylish enclosure. Featuring built in DSP for loudspeaker control alongside advanced signal processing capabilities. Providing a frequency response of 42 Hz - 120 Hz  $\pm$  3 dB, Venu 208i will deliver flawless and consistent bass for commercial or residential applications.

### SPECIFICATIONS

**Frequency response:** 42 Hz - 120 Hz  $\pm$  3 dB  
**Efficiency<sup>1</sup>:** 95 dB 1W/1m  
**Input impedance:** 13 k $\Omega$  balanced  
**Output<sup>2</sup>:** 119 dB cont, 125 dB peak  
**Driver configuration:** 2 x 8" LF  
**Weight:** 21 kg (46.3 lbs)



## Venu 210i

The self-powered Venu 210i is a trail-blazing sub-woofer, with the capacity to power up to four mid-high enclosures from its integral dual 750-Watt power module. Its dual 10" reflex-loaded enclosure features DSP for loudspeaker control and its advanced signal processing capabilities can be accessed via the rear ethernet port. Venu 210i is the ultimate choice for pro home-audio systems, as well as bars, nightclubs, lounges, hotels, and restaurants.

### SPECIFICATIONS

**Frequency response:** 40 Hz - 150 Hz  $\pm$  3 dB  
**Input impedance:** 2 x 10 k $\Omega$  balanced  
**Output:** 122 dB cont, 128 dB peak  
**Driver configuration:** 2 x 10" LF  
**Weight:** 31 kg (68.3 lbs)



# Indigo Series

Elegance in sonic form

## APPLICATIONS

Residential | Restaurants & Cafes | Retail Outlets |  
Gyms/Fitness | Hotels & Resorts

## OVERVIEW

The striking Indigo series brings inspirational levels of sophistication that every venue will want to be seen with. Indigo has been created for the style-conscious buyer that today's venue designers aspire to impress. Boundaries are being pushed in all areas of the entertainment industry, with the visual aspect becoming ever more important. Indigo not only fulfils the quest for the ultimate styling, but it also brings a new level of sonic richness you never thought possible.

[VIEW THE RANGE](#)









## Indigo 6s

Indigo 6s is a sought-after choice for luxury spaces requiring cosmetically conscious, professional audio solutions. The opportunity for colour customisation on the fibreglass enclosure elevates the Indigo 6s' potential, allowing a fully bespoke pro audio system to be realised. Perfect for style-led homes, restaurants, bars, and lounges, or retail and leisure environments. Partnering with an Indigo Sub makes the Indigo 6s the perfect solution for use in medium-sized bars, lounges and restaurants.

### SPECIFICATIONS

**Frequency response:**

70 Hz - 23 kHz  $\pm 3$  dB

**Crossover points:**

3.2 kHz passive

**Nominal impedance:** 8  $\Omega$

**Power handling**<sup>2</sup>: 80 W AES

**Maximum output**<sup>3</sup>:

109 dB cont, 115 dB peak

**Weight:** 2.2 kg (4.9 lbs)

**Enclosure:** Fibreglass

**Finish:** Smooth cellulose or fine textured matt



## Indigo 6 Pro

A favoured choice for audio enthusiasts, the Indigo 6 Pro comprises of a 6.5" low frequency and 1" coaxial high frequency compression driver, delivering improved efficiency and output. The desirable, sculpted fibreglass enclosure provides a stylish and compact solution for luxury spaces seeking a superior sound. Indigo 6 Pro can be made-to-order with bespoke colour customisation in either a smooth cellulose or fine textured matt finish. Most popular amongst rooftop bars and VIP lounges, as well as restaurants, bars, cafes and retail settings.

### SPECIFICATIONS

**Frequency response:** 68 Hz - 21 kHz  $\pm 3$  dB

**Efficiency**<sup>1</sup>: 93 dB 1W/1m

**Crossover points:** 2.2 kHz passive

**Nominal impedance:** 8  $\Omega$

**Power handling**<sup>2</sup>: 200 W AES

**Maximum output**<sup>3</sup>: 116 dB cont, 122 dB peak

**Weight:** 5.2 kg (11.5 lbs)

**Enclosure:** Fibreglass

**Mounting:** wall bracket (supplied), Indigo System Bracket to mount Indigo 6 Pro above Indigo Sub (optional)

**Finish:** Smooth cellulose or fine textured matt





## Indigo Sub

Designed to elevate audio requirements for style-led environments, the Indigo Sub embraces timeless styling. The subwoofer comprises a 12" low-frequency transducer with a frequency response of 40 Hz – 160 Hz  $\pm 3$  dB. When partnered with the Indigo 6s or Indigo 6 Pro, the Indigo Sub combines to form a complete hi fidelity full range system. Perfect for use in moderate-sized bars, lounges, and restaurants, as well as retail outlets, or as fill in nightclubs with an existing main-dance floor system or VIP area.

### SPECIFICATIONS

**Frequency response:**

40 Hz - 160 Hz  $\pm 3$  dB

**Crossover points:** 80 Hz - 160 Hz passive

**Nominal impedance:** 8  $\Omega$

**Power handling**<sup>2</sup>: 400 W AES

**Maximum output**<sup>3</sup>:

118 dB cont, 124 dB peak

**Driver configuration:** 1 x 12" LF

**Weight:** 21 kg (46.3 lbs)

**Enclosure:** Fibreglass

**Mounting:** Indigo System Bracket to mount Indigo 6 Pro above Indigo Sub (optional)



ELEGANCE IN SONIC FORM



# Cirrus Series

Discreet audio innovation

## APPLICATIONS

Nightclubs & Bars | Restaurants & Cafes |  
Retail Outlets | Gyms/Fitness | Hotels & Resorts

## OVERVIEW

The Cirrus Series is a pioneering range of hi end ceiling speakers, perfect for delivering audio fill in a wide range of environments including restaurants and hotels; leisure and retail settings; or as the main system for smaller home-audio and home-theatre set-ups.

[VIEW THE RANGE](#)





## 6.1

Cirrus 6.1 is a stylishly discreet loudspeaker that features a 6.5" low-frequency driver and 0.75" coaxially mounted high-frequency tweeter designed especially for ceiling mounting. The unobtrusive design maintains a contemporary feel and delivers astonishingly powerful audio, despite its extremely compact dimensions. Cirrus 6.1's unobtrusive natures make it suitable for homes, hotels, restaurants, as well as leisure and retail environments. The loudspeaker also includes load spreading installation brackets for use on false ceilings.

### SPECIFICATIONS

**Frequency response:** 96Hz ~ 18KHz (-3dB) / 62Hz ~ 20KHz (-10dB)

**Crossover points:** 3.3 kHz passive

**Nominal impedance:** 8  $\Omega$

**Power handling<sup>2</sup>:** 100 W AES

**Voltage taps:** 100 V - 30 W, 15 W, 7.5 W, 70 V - 30 W, 15 W, 7.5 W and 3.8 W

**Maximum output<sup>3</sup>:** 110 dB cont, 116 dB peak

**Driver configuration:** 1 x 6.5" LF, 1 x 0.75" HF

**Weight:** 3.5 kg (7.7 lbs)

<sup>1</sup>Measured in half space <sup>2</sup>AES2 - 1984 compliant <sup>3</sup>Calculated







# Air Series

Breaking away from the mould

## APPLICATIONS

Nightclubs & Bars | Festivals & Events | Restaurants & Cafes |  
Retail Outlets | Gyms/Fitness | Hotels & Resorts

## OVERVIEW

The Air Series offers trail blazing designs in distinct and unconventional forms with unmatched levels of audio fidelity. Renowned within the audio industry for both its visual stimulus and pioneering technical features. Air series is a favourable choice for clubs, restaurants, and bars wanting to make a long-lasting impression.

[VIEW THE RANGE](#)









## Air Motion

The incomparable form of Air Motion has made it the flagship product for Void Acoustics' phenomenally successful Air series. Ever popular among nightclubs, restaurants, hotels and bars, the Air Motion is a statement piece within the pro audio market. Comprising three transducers, each loaded by an isometric conical horn to deliver enhanced beam width control and phase performance. The result is an exceptionally balanced waveform transmission with stunning sound definition.

### SPECIFICATIONS

**Frequency response:** 140 Hz - 20 kHz  $\pm 3$  dB

**Efficiency<sup>1</sup>:** LF: 106 dB 1W/1m, HMF: 108 dB 1W/1m

**Nominal impedance:** LF: 8  $\Omega$ , HMF: 8  $\Omega$

**Power handling<sup>2</sup>:** LF: 500 W AES, HMF: 250 W AES

**Maximum output<sup>3</sup>:** 132 dB cont, 138 dB peak

**Driver configuration:** 1 x 12" LF, 1 x 8" MF, 1 x 1.5" HF compression driver

**Weight:** 35.4 kg (78 lbs)



## Tri Motion

The aesthetically captivating Tri Motion is perfect for spaces requiring sound with distinctive appearance and demonstrated excellence. The compelling fibreglass composition ensures extremely low levels of resonance, whilst asymmetric waveguides provide improved pattern control. A cornerstone of the Air series, the Tri Motion consistently delivers remarkable and controlled performance in high impact nightclubs, restaurants, style-led bars, and VIP rooms.

### SPECIFICATIONS

**Frequency response:** 120 Hz - 20 kHz  $\pm 3$  dB

**Crossover points:** LF: 120 Hz and 500 Hz, HMF: 500 Hz - Passive 1.4 kHz

**Nominal impedance:** LF: 8  $\Omega$ , HMF: 8  $\Omega$

**Power handling<sup>2</sup>:** LF: 700 W AES, MHF: 250 W AES

**Maximum output<sup>3</sup>:** 135 dB cont, 141 dB peak

**Driver configuration:** 1 x 15" LF, 1 x 8" MF, 1 x 1.5" HF compression driver

**Weight:** 47.1 kg (103.8 lbs)



## Air 8

A statement piece for any venue favouring detail, the Air 8 is often utilised in high-end nightclubs, bars and luxury hotels, lounges, and events. The fibreglass composite structure produces exceptionally low levels of resonance, while optimised dispersion offers ample direct to reflected sound. Featuring high performance components throughout, Air 8's stylish design and use of innovative technologies delivers a contemporary loudspeaker entirely suited for exclusive spaces.

### SPECIFICATIONS

**Frequency response:** 70 Hz - 20 kHz  $\pm 3$  dB

**Nominal impedance:** 8  $\Omega$

**Power handling<sup>2</sup>:** 300 W AES

**Maximum output<sup>3</sup>:** 119 dB cont, 125 dB peak

**Driver configuration:** 1 x 8", 1 x 1" coaxial

**Weight:** 6.2 kg (13.2 lbs)





## Air 15

The Air 15 provides large-scale low frequency output with styling that compliments mid-high enclosures from both the Air and Cyclone series. Its design allows fully formed systems to be achieved in either internal or external environments and features a non-resonant fibreglass enclosure with UV resilient paint. The Air 15 has impressive SPL and low frequency extension capabilities, alongside an IP-53 rating achieved via 'ingress proof vent technology'.

### SPECIFICATIONS

**Frequency response:** 45 Hz - 160 Hz  $\pm 3$  dB

**Efficiency<sup>1</sup>:** 97 dB 1 W / 1 m

**Nominal impedance:** 8  $\Omega$

**Power handling<sup>2</sup>:** 500 W

**Maximum output<sup>3</sup>:** 123 dB Cont, 129 dB Peak

**Driver configuration:** 1 x 15" LF

**Weight:** 29 kg (63.9 lbs)



## Airten V3

Renowned for its jet-engine inspired design, Airten is a classic Void Acoustics product with renown pedigree. The sleek composition and pioneering enhancements of the Airten V3 provide a calibre of performance that is rarely seen. A newly designed crossover provides enhanced frequency linearity, coherence, and summation between the drivers. Whilst the Finite Element Analysis optimised rear port with refined aesthetics increases airflow to reduce power compression, port noise and distortion. Airten V3 has been installed in many high-profile nightclubs, hotels, and restaurants around the world, along with being a favoured choice for exclusive residential installations.

### SPECIFICATIONS

**Frequency response:** 60 Hz - 20 kHz  $\pm 3$  dB

**Efficiency<sup>1</sup>:** 99 dB 1w/1m

**Crossover points:** Passive 1.2 kHz

**Impedance:** 4  $\Omega$

**Power handling<sup>2</sup>:** 500 W AES

**Maximum output<sup>3</sup>:** 125 dB cont, 131 dB peak

**Driver configuration:** 2 x 10" LF, 1 x 1.3" HF compression driver

**Weight:** 20 kg (44.1 lbs)

BREAKING AWAY FROM THE MOULD







## Air Stream

Incorporating advanced technologies and configuration, Air Stream provides consistent true-to-source playback through true point source radiation and phase-coherent behaviour. Full-range capabilities alongside the possibility to include bespoke colour customisation delivers the perfect loudspeaker for aesthetically driven spaces. The industry defying design of Air Stream represents Void Acoustics commitment to next level aesthetics and performance.

### SPECIFICATIONS

**Frequency response:** 54 Hz - 20 kHz  $\pm 3$  dB

**Crossover points:** Passive 1.6 kHz

**Nominal impedance:** LF: 8  $\Omega$ , MHF: 8  $\Omega$

**Power handling<sup>2</sup>:** LF: 700 W AES, MHF: 500 W AES

**Maximum output<sup>3</sup>:** 134 dB cont, 140 dB peak

**Driver configuration:** 1 x 15" LF, 1 x 12" MF, 1 x 1.5" HF compression driver

**Weight:** 42.5 kg (93.7 lbs)



## Air Vantage

Create a sonic and visual impact with the Air Vantage, a stylishly modern design perfect for high profile events and spaces wanting to make a statement. The signature Void fibreglass composite construction ensures low levels of resonance, while optimised dispersion control guarantees even coverage of sound. True point source radiation and dual-purpose capabilities make it suitable for operation in a front of house system or for DJ monitoring.

### SPECIFICATIONS

**Frequency response:** 140 Hz - 20 kHz  $\pm 3$  dB

**Nominal impedance:** 8  $\Omega$

**Power handling<sup>2</sup>:** 500 W AES

**Maximum output<sup>3</sup>:** 126 dB cont : 132 dB peak

**Driver configuration:** 1 x 12" - 1 x 1.5" coaxial

**Weight:** 23.5 kg (51.8 lbs)





## Sub Vantage

Sub Vantage provides a stylish modern alternative for luxury spaces compared to existing subwoofers on the market. Comprising four 15" ultra-high-power transducers; alongside a newly developed split manifold arrangement delivering hyper-quick transients, Sub Vantage boasts unparalleled output for its dimensions. Pairing perfectly with an Air Stream or Air Vantage as a DJ monitoring system for nightclubs, sports bars, members clubs and lounges, while also being a favoured choice for larger events.

### SPECIFICATIONS

**Frequency response:** 40 Hz - 160 Hz  $\pm 3$  dB

**Crossover points:** 140 Hz

**Nominal impedance:** 2 x 4  $\Omega$

**Power handling**<sup>2</sup>: 2 x 1600 W AES

**Maximum output**<sup>3</sup>: 142 dB cont, 148 dB peak

**Driver configuration:** 4 x 15"

**Weight:** 91.2 kg (201 lbs)



## Stasys Xair

The special 'Air' edition of the classic Stasys XV2, the Stasys Xair subwoofer is highly regarded with an indisputable reputation amongst audio professionals. Stasys Xair features stunning red aluminium bracing, available in bespoke colouring for style-led installations. Whilst dual 18" transducers and a hybrid horn-loaded enclosure significantly enhance transient and phase response. The tough 'TourCoat' polyurea finish and truck-pack friendly dimensions make the Xair perfect for touring and events; while visual enhancements from the Stasys XV2 drive the aesthetic appeal for nightclubs and venues guided by design.

### SPECIFICATIONS

**Frequency response:** 30 Hz - 180 Hz  $\pm 3$  dB

**Crossover points:** 38 Hz Hi Pass 24 dB/oct, 100 Hz - 145 Hz, Lo Pass 24 dB/oct

**Nominal impedance:** 4  $\Omega$

**Power handling**<sup>2</sup>: 3200 W AES

**Maximum output**<sup>3</sup>: 139 dB cont, 145 dB peak

**Driver configuration:** 2 x 18" LF

**Weight:** 130 kg (286.6 lbs)







# Nexus Series

Radical style and technology combined

## APPLICATIONS

Nightclubs & Bars | Festivals & Events

## OVERVIEW

Embracing ultra-modern technologies in stylishly futuristic forms, the Nexus series is a modern piece of aural art, guaranteed to impress any listener. Nexus brings the performance and styling of the future to the here and now. Its radical styling is born from an innovative approach to delivering the best fidelity and coverage for the club scene of tomorrow. Virtual Arc technology is implemented in the mid-hi enclosures to form a common acoustic centre that creates the same sonic experience for all listeners.

[VIEW THE RANGE](#)





## Nexus 6

The radical styling of the Nexus 6 is born from the innovative internal layout of its 20 transducers. Consisting of 20 high-power drivers, housed in a sculpted fibreglass enclosure that can be ground stacked on low-frequency enclosures or flown independently. Virtual Arc technology is utilised to form a common acoustic centre that exists rearwards of the array, aiding to overcome the traditional disadvantages of multiple sound sources emitting from various locations. Dispersion, phase, coherency, and timing are controlled and unified, delivering the same audio coverage in every corner. The elevated levels of performance and aesthetic advances demonstrated by the Nexus 6 make it perfect for large nightclubs, festivals, and bars.

### SPECIFICATIONS

**Frequency response:** 78 Hz - 21 kHz  $\pm 3$  dB

**Crossover points:** 1.6 kHz active

**Nominal impedance:** LF: 2 x 5.3  $\Omega$ , HF: 2 x 4  $\Omega$

**Power handling**<sup>2</sup>: LF: 2 x 1350 W AES, HF: 2 x 320 W AES

**Maximum output**<sup>3</sup>: 137 dB cont, 140 dB peak

**Driver configuration:** 12 x 6.5" LF, 8 x 1" HF compression driver

**Weight:** 75.5 kg (166.5 lbs)



## Nexus X

With eight-thousand Watts of unadulterated power, Nexus X serves the lower spectrum of the Nexus low-frequency system. Comprising eight 12" drivers, each capable of extreme excursion with minimal distortion and featuring Dual Neutrik SpeakON™ NL4 linkups for driver connections. Material technology advancements reduce resonance while multiple transducers work in unison to provide elevated levels of efficiency and lower distortion. Skeletal-style aluminium braces and advanced enclosure design enhance Nexus X's aesthetic appeal, while customisation provides the chance to own a completely bespoke sound system.

### SPECIFICATIONS

**Frequency response:** 36 Hz - 100 Hz -3dB

**Nominal impedance:** 2 x 4  $\Omega$

**Power handling**<sup>2</sup>: 2 x 4000 W AES

**Maximum output**<sup>3</sup>: 146 dB cont 152 dB peak

**Driver configuration:** 8 x 12" neodymium

**Weight:** 137 kg (302 lbs)





## Nexus Q

Nexus Q comprises part of the Nexus low-frequency system, delivering unbeatable upper bass definition through its pioneering enclosure design. The four high-power 12" transducers use a front-loaded horn to achieve high efficiency and a front to back port with a newly designed 'pressure gradient' arrangement. The ground-breaking configuration results in an enclosure with unmatched output and definition, alongside total elimination of any colouration from turbulent or mechanical port noise. Nexus Q is suited for high-impact nightclubs, concerts, and festivals.

### SPECIFICATIONS

**Frequency response:** 60 Hz - 150 Hz  $\pm 3$ dB

**Crossover points:** 70 Hz

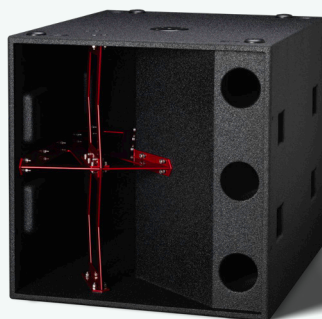
**Nominal impedance:** 2 x 4  $\Omega$

**Power handling**<sup>2</sup>: 2 x 2000 W AES

**Maximum output**<sup>3</sup>: 145 dB cont, 151 dB peak

**Driver configuration:** 4 x 12"

**Weight:** 130 kg (286.6 lbs)



## Nexus XL

Nexus XL is an alternative to the Nexus X low-frequency enclosure and designed to be partnered with the Nexus Q. Unimaginable levels of performance have been achieved through further refining of the five resonant chamber theory used in the infamous Stasys X. Comprising a single 21" transducer, the Nexus XL offers a distinctive character of reproduction, more suited to bass lead genres when partnered with the Nexus Q. The impressive advancements in the Nexus XL have created the perfect foundations for breath-taking nightclub sound.

### SPECIFICATIONS

**Frequency response:** 30 Hz - 150 Hz  $\pm 3$ dB

**Crossover points:** Hi Pass 30 Hz - 24 dB/oct

**Nominal impedance:** 8  $\Omega$

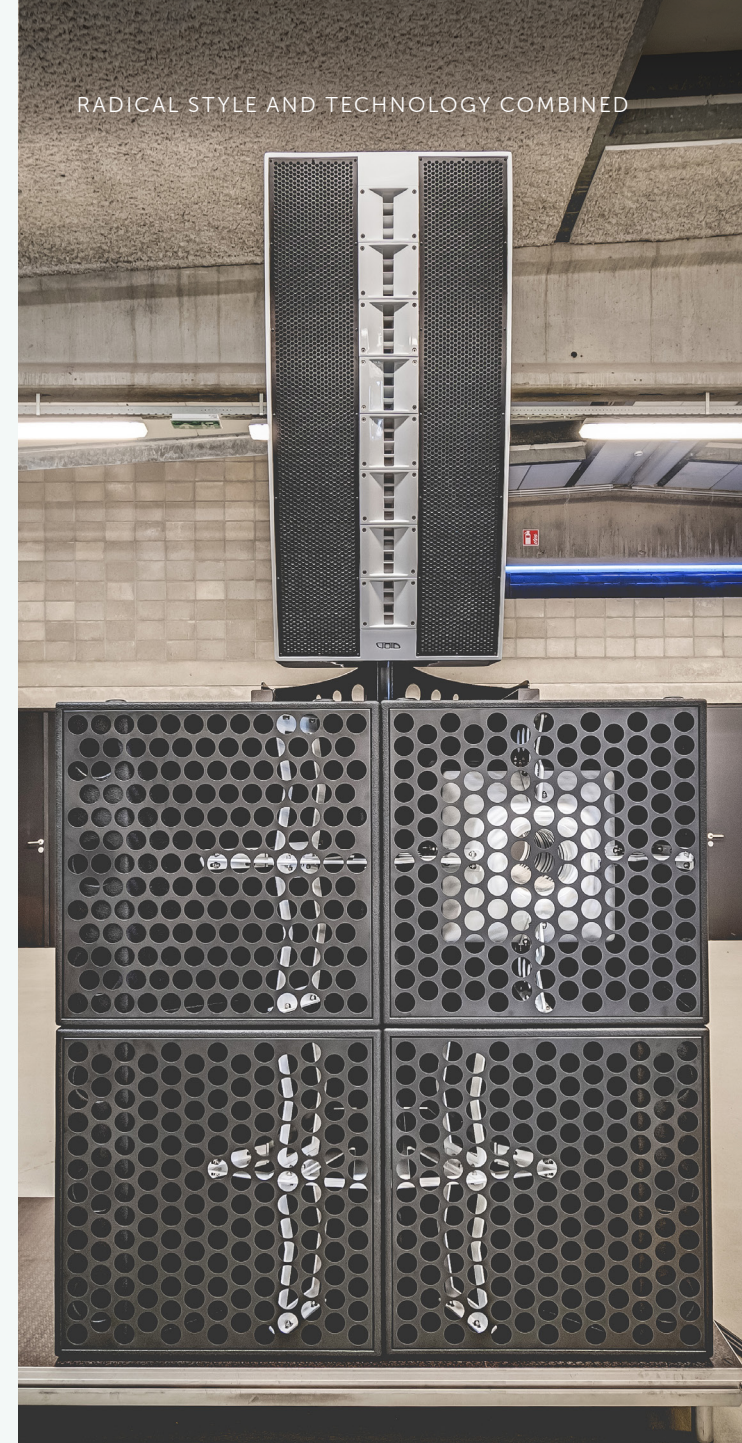
**Power handling**<sup>2</sup>: 2000 W AES

**Maximum output**<sup>3</sup>: 135 dB cont; 141 dB peak

**Driver configuration:** 1 x 21"

**Weight:** 90 kg (198.4 lbs)

RADICAL STYLE AND TECHNOLOGY COMBINED







# Incubus Series

A vision of the future

## APPLICATIONS

Nightclubs & Bars | Festivals & Events

## OVERVIEW

Renowned for its visually stimulating form and unmistakable sonic signature, the Incubus system is redefining expectations around the world. Its ability to deliver both linear frequency and power shading within a single mid-top enclosure ensures faultless audio coverage for every listener on the dance floor. As the go-to choice for discerning interior designers, Incubus should be utilised by anyone looking to push both sonic and visual boundaries to the edge.

[VIEW THE RANGE](#)









## Air Array

Air Array's futuristic form is simply incomparable and purposefully designed for aesthetically driven nightclubs, event-spaces and festivals. Serving as the mid-high element of the Incubus system, it unites ground-breaking technologies to deliver irrefutable high-fidelity audio. Making use of frequency and power shading, Air Array can provide constant SPL at all distances and counteract HF absorption right to the middle of a dance floor. The low-mid and mid sections transducers feature a heatsink cooling system to reinforce reliability and reduce power compression levels, combining to produce exceptional output levels with the highest definition imaginable.

### SPECIFICATIONS

**Frequency response:** 90 Hz - 26 kHz  $\pm 3$  dB

**Nominal impedance:** LF: 2 x 4  $\Omega$ , MF: 2 x 4  $\Omega$ , HF: 2 x 5.33  $\Omega$

**Power handling<sup>2</sup>:** LF: 3600 W AES, MF: 800 W AES, HF: 320 W AES

**Maximum output<sup>3</sup>:** 146 dB cont, 152 dB peak

**Driver configuration:** 4 x 12" LF, 4 x 3" MF compression driver, 6 x 1" HF compression driver

**Weight:** 144.8 kg (319.2 lbs) including stand



## Incubus Sub

Operating as a hybrid horn-loaded bandpass subwoofer, Incubus Sub comprises three enormous 21" transducers with a combined power handling of 6000 Watts RMS. Designed to work in conjunction with the Hyperfold upper bass enclosure, the Incubus Sub has been tuned with all forms of dance music in mind. A lightning-quick impulse response with low group delay and a distinctly recognisable design combines to create an unforgettable listening experience that is perfect for any space requiring ballistic levels of sub 60Hz content.

### SPECIFICATIONS

**Frequency response:** 29 Hz - 95 Hz  $\pm 3$  dB

**Crossover points:** Via presets

**Nominal impedance:** 3 x 8  $\Omega$

**Power handling<sup>2</sup>:** 6000 W AES

**Maximum output<sup>3</sup>:** 142 dB cont, 148 dB peak

**Driver configuration:** 3 x 21" LF with 6" voice coils

**Weight:** 214 kg (471.8 lbs)





## Hyperfold

Designed to elevate every listener's dance experience, Hyperfold unleashes upper-bass frequencies with a speed and articulation that is second to none. Dubbed the mother of all kick cabs, the Hyperfold features four high excursion 15" transducers with heatsink conductance. And when arrayed, multiple enclosures mutually couple to deliver gains in output far beyond the measured 148dB maximum output from a single unit. Hyperfold provides a total connection with the fundamental frequencies that give music its life.

### SPECIFICATIONS

**Frequency response:** 60 Hz - 190 Hz  $\pm 3$  dB

**Crossover points:** Via presets

**Nominal impedance:** 2 x 4  $\Omega$

**Power handling<sup>2</sup>:** 4000 W AES

**Maximum output<sup>3</sup>:** 146 dB cont, 152 dB peak

**Weight:** 150 kg (330.7 lbs)











# Arcline Series

Taking touring to the next level

## APPLICATIONS

Festivals & Events | Live Music Venues | Nightclubs & Bars

## OVERVIEW

Keeping at the forefront of technology, Void's pioneering spirit has produced a ground-breaking creation with the Arcline series. Renowned amongst the live-sound industry for consistently delivering unmatched fidelity, without any compromise for ease of use. Arcline is leading the way in live-sound and touring with its proven versatility and is a superb choice for events requiring uniform audio coverage for medium to large audiences.

[VIEW THE RANGE](#)





## Arcline 8

The three-way Arcline 8 is trusted amongst live-sound audio professionals because of its hi fidelity capabilities, definition and extremely high output levels. Arcline 8 delivers a true 110-degree dispersion and maintains a highly uniform polar pattern due to a new design of high-frequency waveguide. The lightweight enclosure and TourCoat polyurea finish make the Arcline 8 a popular choice for large scale-touring, indoor and outdoor events as well as for use in bars, nightclubs, and live music venues.

### SPECIFICATIONS

**Frequency response:**

110 Hz - 20 kHz single enclosure, 90 Hz - 20 kHz three enclosures

**Nominal impedance:** 2 x 16  $\Omega$

**Power handling**<sup>2</sup>: LF: 500 W AES, HMF: 500 W AES

**Maximum output**<sup>3</sup>: 132 dB cont, 139 dB peak

**Driver configuration:** 2 x 1.4" compression drivers, 2 x 8" mid drivers with phase device, 2 x 8" horn loaded low frequency drivers

**Dispersion:** 110°H x 12°V

**Weight:** 39 kg (86 lbs)



## Arcline 212

Designed for the demanding live market, the Arcline 212 low frequency enclosure delivers new levels of output for its weight class. The 212s compact dimensions coupled with remarkably high levels of definition and extended LF response, make it the perfect choice for any touring inventory. Arcline 212 features dual high power 12" transducers and can be flown in an array to increase the LF extension of smaller arrays, or ground stacked in multiples using the Arcline fly frame. The result is a full range, low profile system that is perfect for large venues, medium to large-scale touring, as well as indoor or outdoor events.

### SPECIFICATIONS

**Frequency response:** 50 Hz - 200 Hz

**Nominal impedance:** 2 x 8  $\Omega$

**Power handling**<sup>2</sup>: 2 x 900 W AES

**Maximum output**<sup>3</sup>: 131 dB cont, 137 dB peak

**Driver configuration:** 2 x 12" low frequency drivers

**Weight:** 42 kg (92.6 lbs)





## Arclite

Designed for pairing with Arcline 218 and 118 subwoofers, Arclite operates as a two-way active, three-way arrayable point source loudspeaker. Offering scalability with maximum output and coherence, to deliver a true point source alternative to the Arcline 8. Dual NL4 speakON™ connectors with link out and minimal rigging requirements for ground stacked deployments allows for very fast set-up times.

### SPECIFICATIONS

**Frequency response:** 45 Hz - 18 kHz  $\pm 3$  dB

**Nominal impedance:** LF: 8  $\Omega$ , MHF: 16  $\Omega$

**Power handling**<sup>2</sup>: LF: 1000 W, MHF 190 W

**Maximum output**<sup>3</sup>: 133 dB Cont, 139 Peak

**Driver configuration:** 1 x 15" LF, 1 x 4" MF, 1 x 2.5" HF

**Weight:** 44 kg (97 lbs)



## Arcline 118

The Arcline 118 contains a high-power 18" neodymium transducer and is arrayable with the Arcline 218 in a variety of configurations, including cardioid. A Finite Element Analysis (FEA) modelled hyperboloid port significantly reduces port noise and air distortion, whilst front and rear connections support fast cardioid deployment. Arcline 118 can be arrayed independently and truck-friendly packing dimensions allows it to be cased and transported in multiples, reducing the total amount of manpower needed, as well as setup time.

### SPECIFICATIONS

**Frequency response:** 32 Hz - 200 Hz  $\pm 3$  dB

**Nominal impedance:** 8  $\Omega$

**Power handling**<sup>2</sup>: 1500 W AES

**Maximum output**<sup>3</sup>: 128 dB cont., 134 dB peak

**Driver configuration:** 1 x 18" LF neodymium

**Weight:** 55 kg (121.3 lbs)



## Arcline 218

Comprising two high power 18" neodymium transducers, Arcline 218 provides a solid foundation to the Arcline series with ground-breaking technical innovations. The use of extensive Finite Element Analysis (FEA) delivers unmatched performance while maintaining a minimal footprint. Every part of its design has been meticulously refined to exceed the demanding requirements in touring-based environments. The front and rear speakON™ connectors allow for attractive cable management when running in a cardioid configuration, while a new ergonomic handle cup design reduces any strain during handling.

### SPECIFICATIONS

**Frequency response:** 30 Hz - 200 Hz  $\pm 3$  dB

**Nominal impedance:** 2 x 8  $\Omega$

**Power handling**<sup>2</sup>: 3000 W AES

**Maximum output**<sup>3</sup>: 134 dB cont, 140 dB peak

**Driver configuration:** 2 x 18" LF neodymium

**Weight:** 91 kg (200.6 lbs)





## ArcM 12

Consciously designed with consideration to its overall aesthetic impact in any setting, the ArcM 12's low-profile allows for cleaner stage and sight lines. Featuring a high power coaxial 12" and 1.4" neodymium transducer, ArcM 12 can be deployed in two different mounting angles, catering for both stage and near-field monitoring. Extensive Finite Element Analysis (FEA) has been incorporated to reduce port noise and air distortion significantly. ArcM 12 is an accomplished performer for touring, bars, clubs, lounges, corporate and AV settings, or within live music venues as stage monitoring.

### SPECIFICATIONS

**Frequency response:** 60 Hz - 18 kHz  $\pm 3$  dB

**Crossover point:** 1.2 kHz (passive)

**Nominal impedance:**

1 x 8  $\Omega$  passive, 1 x 8  $\Omega$  (LF) and 1 x 16  $\Omega$  (HF) active

**Power handling<sup>2</sup>:** 500 W AES

**Maximum output<sup>3</sup>:** 126 dB cont., 132 dB peak

**Driver configuration:** Coaxial 1 x 12" - 1 x 1.4" neodymium

**Weight:** 19 kg (41.9 lbs)



## ArcM 15

The ever-versatile ArcM 15 incorporates advanced ergonomics to guarantee quick and easy deployment, making it perfect for touring-based applications, theatres and live music venues. Dual mounting angles expand versatility, whilst external dimensions have been optimised for truck-friendly packing. Comprising a coaxial 15" and 1.4" neodymium transducer, ArcM 15 is an attractive solution for touring, bars, clubs, lounges, corporate and AV settings, or within live music venues as stage monitoring.

### SPECIFICATIONS

**Frequency response:** 50 Hz - 18 kHz  $\pm 3$  dB

**Crossover point:** 1k2Hz (acoustic)

**Nominal impedance:**

1 x 8  $\Omega$  passive, 1 x 8  $\Omega$  (LF) and 1 x 16  $\Omega$  (HF) active

**Power handling<sup>2</sup>:** 500 W AES

**Maximum output<sup>3</sup>:** 126 dB cont., 132 dB peak

**Driver configuration:** Coaxial 1 x 15" - 1 x 1.4" neodymium

**Weight:** 22.5 kg (49.6 lbs)











# Bias Series

Powering the future

## OVERVIEW

Ready to power the future of sound, Bias is a series of very advanced audio amplifiers that exhibit exceptional levels of efficiency. Each amplifier in the series has been expertly designed into a very compact package, which is both user and environmentally friendly. All Bias amplifiers contain state of the art DSP, which can be accessed with the Armonia Pro Audio Suite™, and are compatible with our suite of optimised pre-sets, ensuring consistent and hi fidelity performance from our loudspeakers.

[VIEW THE RANGE](#)





## Bias Q5

The ingenious advancements of the Bias Q5 place versatility and ease-of-use at the heart of its design, to deliver an amplifier that is optimised for a wide number of applications. Equipped with four channels, Bias Q5 provides an innovative DSP that offers flexible routing and mixing. All Bias amplifiers are compatible with our suite of optimised pre-sets to ensure quality, consistency and maximised performance from our loudspeakers. In addition to touring, Bias Q5 is the perfect choice for nightclubs, bars, houses of worship, festival events and theatres.

### SPECIFICATIONS

**Number of channels:** 4

**Output:** 5200 W @ 2  $\Omega$ , 4000 W @ 2.7  $\Omega$ , 3000 W @ 4  $\Omega$ , 1600 W @ 8  $\Omega$

**Output bridged:** 10400 W @ 4  $\Omega$ , 6000 W @ 8  $\Omega$

**Height:** 44.5 mm (1.75")

**Width:** 483 mm (19")

**Depth:** 358 mm (14.1")

**Weight:** 15 kg (33 lb)



## Bias Q1

Bias Q1 presents an environmentally friendly, energy-saving alternative to existing amplifiers on the market. Elevated levels of efficiency have resulted in low operation costs, power consumption, heat dissipation and carbon footprint. The dimensions of Bias Q1 provide a lightweight and compact amplifier that is just as durable as its counterparts. Bias amplifiers are compatible with our suite of optimised pre-sets, ensuring the delivery of first-class audio fidelity.

### SPECIFICATIONS

**Number of channels:** 4

**Output:** 300 W @ 8  $\Omega$ , 300 W @ 4  $\Omega$ , 400 W @ 2  $\Omega$

**Output bridged:** 800 W @ 4  $\Omega$ , 600 W @ 8  $\Omega$

**Height:** 44.5 mm (1.75")

**Width:** 483 mm (19")

**Depth:** 358 mm (14.1")

**Weight:** 7 kg (15.4 lb)



## Bias Q1.5

Providing more power than a Q1, and less than a Q2, Bias Q1.5 is capable of powering products such as Air 8, Airten V3 and Air Vantage. Delivering impressive sound quality contained within a lightweight and compact unit, Bias Q1.5 is truly reliable. The four-channel amplifier embraces intelligent technology with a highly efficient microprocessor-controlled power supply with built in Power Factor Correction for flawless operation, alongside Powersoft's patented Smart Rails Management technology.

### SPECIFICATIONS

**Number of channels:** 4

**Output:** 800 W @ 2  $\Omega$ , 600 W @ 4  $\Omega$ , 600 W @ 8  $\Omega$

**Output bridged:** 1200 W @ 8  $\Omega$ , 1600 W @ 4  $\Omega$

**Height:** 44.5 mm (1.75")

**Width:** 483 mm (19")

**Depth:** 358 mm (14.1")

**Weight:** 7 kg (15.4 lb)





## Bias Q2

The four-channel Bias Q2 exhibits very high levels of efficiency, resulting in reduced operation cost, power consumption, heat dissipation and carbon footprint, to deliver a contemporary amplifier that is suitable for a host of applications. To ensure quality and consistency across the Bias range, all amplifiers are compatible with our suite of optimised pre-sets. Bias Q2 is optimised for use in nightclubs, hotels, restaurants, retail outlets and more.

### SPECIFICATIONS

**Number of channels:** 4

**Output:** 1500 W @ 2  $\Omega$ , 1200 W @ 4  $\Omega$ , 1200 W @ 8  $\Omega$

**Output bridged:** 3000 W @ 4  $\Omega$ , 2400 W @ 8  $\Omega$

**Height:** 44.5 mm (1.75")

**Width:** 483 mm (19")

**Depth:** 358 mm (14.1")

**Weight:** 7 kg (15.4 lb)



## Bias D1

Bias D1 amplifier is a fully integrated amplifier with extensive system management features including sound shaping and limiter functionality. The front panel contains LED display supplying status feedback, which can also be accessed by connecting the amplifier to a PC running Armonia Pro Audio Suite™. Designed to work with Lo-Z (from 2  $\Omega$ ) and 70V/100V distributed lines, any mixed configuration of low and high impedance output loads is possible, making the ever-versatile Bias D1 suitable for all applications in installed sound reinforcement systems.

### SPECIFICATIONS

**Number of channels:** 2

**Output:** 1000 W @ 2  $\Omega$ , 800 W @ 4  $\Omega$ , 800 W @ 8  $\Omega$

**Output bridged:** 2000 W @ 4  $\Omega$ , 1600 W @ 8  $\Omega$

**Height:** 44.5 mm (1.75")

**Width:** 483 mm (19")

**Depth:** 358 mm (14.1")

**Weight:** 7 kg (15.4 lb)



## Bias Q3

The innovative Bias Q3 amplifier, offers total integration with the Armonia Pro Audio Suite™, enabling extended control via smartphones and tablets. The Q3 is capable of delivering 4 x 2000 W into 4  $\Omega$  loads, increasing to 2300 W when driven asymmetrically. The advanced built-in DSP has a very high dynamic range and an extensive feature set. In addition to touring, Bias Q3 is the ideal choice for nightclubs, bars, houses of worship, festival events and theatres.

### SPECIFICATIONS

**Number of channels:** 4

**Output:** 2000 W @ 2  $\Omega$ , 2000 W @ 4  $\Omega$ , 1400 W @ 8  $\Omega$

**Output bridged:** 4000 W @ 4  $\Omega$ , 4000 W @ 8  $\Omega$

**Height:** 88.9 mm (3.5")

**Width:** 483 mm (19")

**Depth:** 381 mm (15")

**Weight:** 11.5 kg (25.4 lb)



# Inca

Dependable, adaptable and elegant

## APPLICATIONS

Gyms/Fitness | Hotels & Resorts | Residential |  
Restaurants & Cafes | Retail Outlets

## OVERVIEW

The Inca amplifier offers an unobtrusive, compact and elegant solution for a wide variety of applications. Adaptability is one of its key features and is equally at home in restaurants, retail, residential or any other hospitality setting. The dependable Inca includes powerful onboard DSP and 4 channel operation, allowing it to power a wide range of systems from a single amplifier. Ease of setup has further been enhanced by a speaker preset menu, digital linking capabilities and zoning configurations, which can be accessed via any web enabled device including mobile phones and laptops.

[VIEW THE RANGE](#)







## Inca 500

The Inca 500 amplifier is a half rack width, 1U format power amplifier that can drive both conventional low impedance (Low-Z, 4Ω to 16Ω) loudspeakers and high impedance (Hi-Z, 70V/100V) transformer coupled loudspeakers. The Inca 500 provides four analog inputs, one stereo S/PDIF digital input, and four outputs (Low-Z mode) or two outputs (Hi-Z mode). It is capable of a maximum output of 125 Watts per channel into Low-Z loads or 250 Watts per channel into Hi-Z loads. The Inca 500 also incorporates automatic power sharing technology that enables 250 Watts to be shared proportionately as required across each output pair in Low-Z mode and the two outputs in Hi-Z mode.

### SPECIFICATIONS

**Number of channels:** 4

**Output:** 125 W per channel

**Height:** 44 mm (1.7")

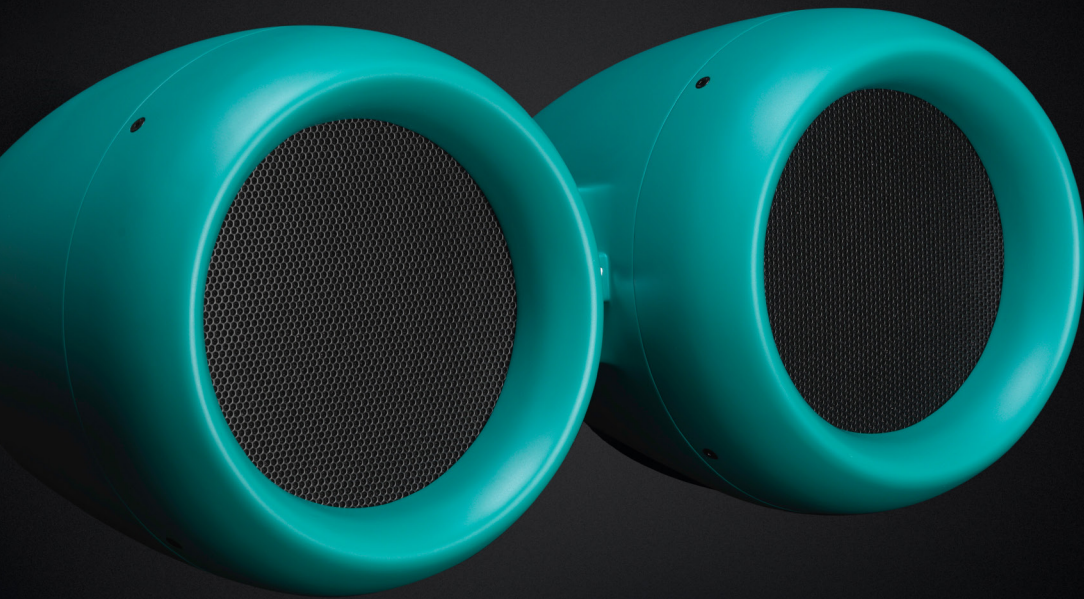
**Width:** 220 mm (8.7")

**Depth:** 319 mm (12.6")

**Weight:** 2.8 kg (6.2 lb)





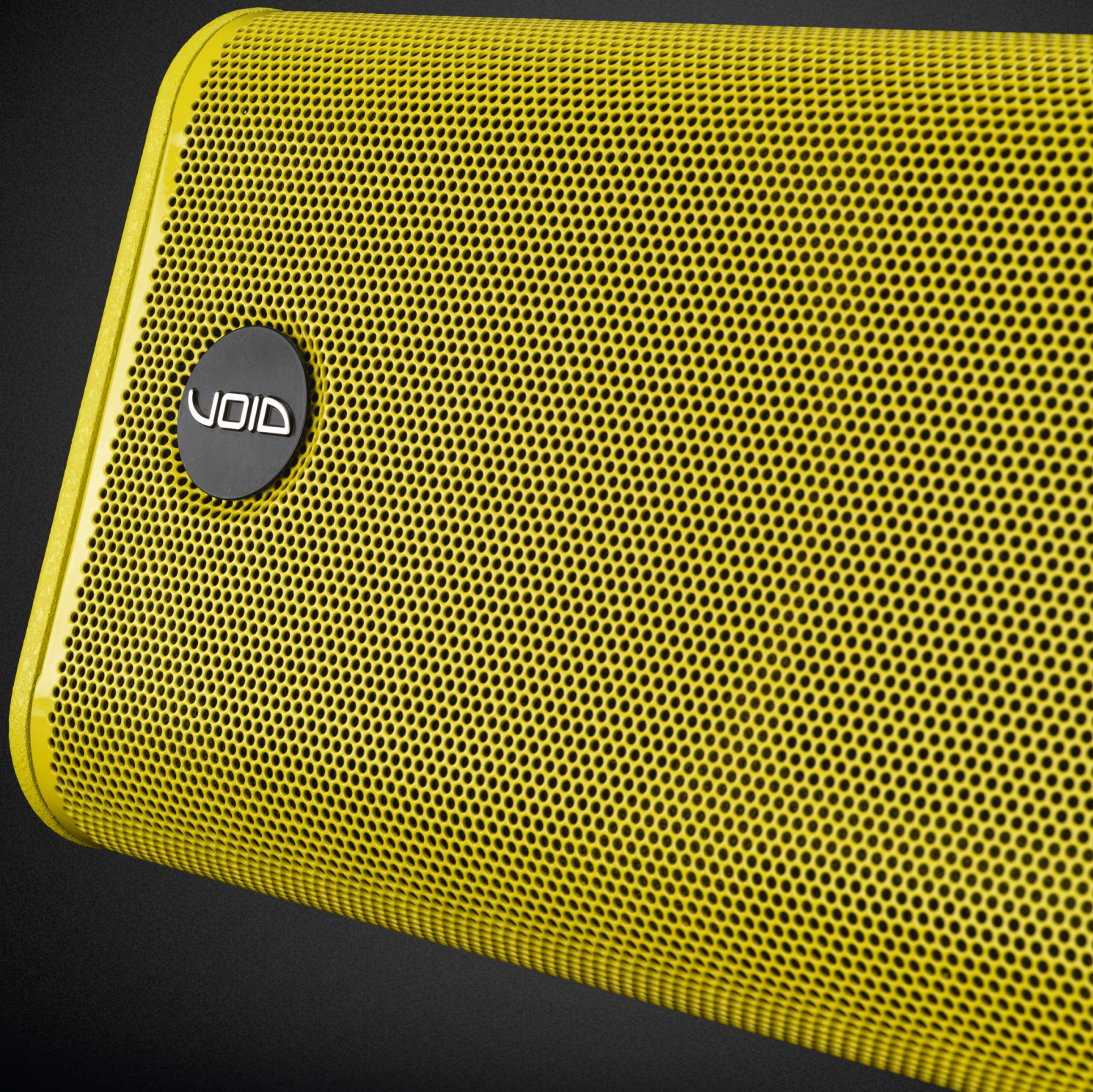


# Colour customisation

We love creating one-of-a-kind colour schemes on systems that become a talking point for how they look, as well as how they sound.

All our fibreglass products can be customised to exactly match your desired colour scheme, or contrastingly complement a venue's interior design or branding. Our bespoke RAL colour service includes 70 different metallic options, in addition to the 420 standard matte and gloss-finish colours. We also take special orders and requests for colour customised bracing on our subwoofers, including our Stasys Xair, Incubus Sub and Hyperfold models.







CASE STUDY

# Chateau Denmark

Void Acoustics integrates  
with British pop music history

For any British music aficionado 'Denmark Street' conjures up images of the music management and publishing companies of the 1950s, as well as the music shops and recording studios which filled the street in the 1960s and 1970s.

Located in this historic part of London's West End, the new and independent brand 'Chateau Denmark' consists of 55 rooms and apartments set across 16 buildings and signifies a deep-rooted homage to musical roots, and it is here that you will find some unique Void Acoustics systems.

[READ MORE](#)







## CASE STUDY

# Heart WeHo

## High energy sound system for WeHo's Heart Nightclub

Heart WeHo, is an immersive dance and night club with one of the 'best-sounding systems' in the US. Jason Ojeda of New York based integrator Global AV Group fulfilled the brief for a high energy, high SPL system with definition and clarity. Void checked all the boxes for this project as the perfect solution for this 1500-capacity venue owned by club operator Rocco's and part-owner, Lance Bass, former singer of N'SYNC.

[READ MORE](#)





## CASE STUDY

# Mansion

"As DJs, one of the favourite sound systems we perform with are Void systems"

The city of Liverpool has a long-standing history for its vibrant nightlife and club scene. And so the opening of the refurbished Mansion nightclub was met with eager anticipation and much hype by locals and tourists alike in early Autumn 2020.

[READ MORE](#)





## CASE STUDY

# Noku Beach House

Void Acoustics is in paradise

Take an idyllic, tropical island paradise, a major Netflix series on luxury properties, and a Void Acoustics sound system and hey presto – welcome to Noku Beach House in Bali.

Void Acoustics may have a headline reputation as an audio solutions provider for high-end club installations, but the breadth and capabilities of Void products stretch far beyond clubs and bars. And what better illustration than the expertly specified Void installation at the privately-owned Noku Beach House located in Bali's chic Seminyak Beach resort.

[READ MORE](#)





## CASE STUDY

# Hilton Bay Absolut Beach & Surf

Void Acoustics catches the surf in Tel Aviv

Atzmaut Beach (AKA Hilton Beach) is a popular destination for the young local surfing community and tourists (in more regular times) alike, and boasts plenty of bars and restaurants to frequent. But few are more luxurious than beach bar Hilton Bay Absolut Beach & Surf. And with luxury comes a high-end audio installation courtesy of Void Acoustics and exclusive Israeli Void Acoustics distributor – New Audio Pro Ltd.

[READ MORE](#)





## CASE STUDY

# Kingdom of Sweets London

## Sugar Coated Retail for Void Acoustics

The retail chain, Kingdom of Sweets, commissions a custom Void Acoustics installation, and it is sweeter than ever. For a company better known for supplying exceptional club sound systems around the world, there has been a recent 'sugar coated' opportunity for Void Acoustics to make an appearance on a high street near you!

[READ MORE](#)





## CASE STUDY

# Heated Room

Void deploys hot audio for Los Angeles' Heated Room

"A new approach to working out in Los Angeles includes a fresh approach to ensuring our sound system provides maximum inspiration and brings out the very best in our clients," smiles an enthusiastic Raamy Fares, Owner and Founder of Heated Room. "And we wanted nothing short of the best."

[READ MORE](#)

[WATCH THE DEMO](#)





## CASE STUDY

# The Angeles

Uplifting installation in Florida

A bold and imaginative example of how to repurpose a neglected building and breathe life back into it could not be more vividly demonstrated than turning a 125-year-old church into a modern restaurant and nightclub.

[READ MORE](#)



# Contact Void Acoustics

## UK, EUROPE AND ASIA PACIFIC

Void Acoustics Research Ltd,  
Unit 15, Dawkins Road Industrial Estate,  
Poole, Dorset,  
BH15 4JY  
United Kingdom

**Call:** +44 (0) 1202 666006

**Email:** [sales@voidacoustics.com](mailto:sales@voidacoustics.com)

## NORTH AMERICA AND SOUTH AMERICA

**Call:** +1 (630) 6866616

**Email:** [sales.usa@voidacoustics.com](mailto:sales.usa@voidacoustics.com)

## CONNECT



ENQUIRE FOR PURCHASE OPTIONS

Void Acoustics Research Limited is a company registered in England and Wales registration number 07533536







