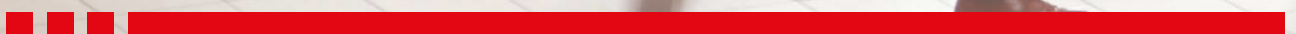


**HELVIN**  
Set up your solutions







# HELVIN

Set up your solutions

**HELVIA®** is the brand owned by *FRENEXPORT S.p.A.* created in 2019 and specifically dedicated to the ever-growing demand for integrated audio-video systems from international markets, already followed for decades in the MI Pro-Audio, DJ and Lighting sectors.

The strong commercial and technical experience, linked to efficient logistics management and the solid knowledge of import/export dynamics, represent one of the distinctive elements that FRENEXPORT, through the **HELVIA** brand, now offers also to the integrated audio-video systems market. Know-how and solidity of a company with over 40 years of history that at the same time is strongly projected towards the future.

As evidence of the deep connection between the brand and a company with such a solid history, HELVIA brand takes its name from an ancient Roman colony - Helvia Recina - built around the third century B.C. in the area where FRENEXPORT S.p.A. is currently located. This is a tangible sign of how the cultural identity is a basic element in HELVIA's values.

The combination between roots and thrust towards the future appears bright and detailed in the vision that guides its goals, always keeping as a reference the values at the base of its corporate culture. HELVIA intends to offer integrated audio/video technologies with high-level performance, maximum ease of installation and maintenance. The basic idea is to make these technologies accessible to all operators and users by providing competence, integrity and the ability to know how to innovate and adapt their systems or any need.

The HELVIA Team

[helviasystems.com](http://helviasystems.com)



H-M/PLAY SERIES  
Mixer Amplifier with DAB+/FM/USB/BT

Helvia HSMA / HDMA / HMMA Play Series bring a wide offer of integrated PA Sound Reinforcement solutions with digital amplifiers in class-D with processing, zone number from 1 to 4 with 100V outputs, rated powers between 120W and 350W total\*, an overall 4-16O power output and a whole series of features such as DAB+receiver, BT audio streaming, USB player, FM radio, mixer with 1 front Mic input with priority, 3 Mic/Line inputs, +48V Phantom Power, 2 stereo Aux Inputs, Level Attenuators for each zone, EMC input at 100V, auxiliary power supply at +24V DC (only models at 120W and 240W). In short, these new mixer-amplifiers enclose in 2 standard 19 "units (rack-ear kit included) everything required for a simple and efficient small-to-medium multi-zone installation.

Features

- Class-D Power Amplifiers with 120W RMS power
- 100V Constant Voltage Zone Output
- 4-16? Overall Low-Impedance Output (not controlled by zone attenuators)
- Built-in High-Efficiency Digital Audio Processing
- Advanced Over Current and Overload Protection
- DC 24V Auxiliary Power Supply for Emergency Purposes
- EMC 100V Emergency Input with Priority
- Multimedia Player with OLED Screen and Remote Control
- FM, DAB+, BT 5.0, USB Operation
- Mixer with Independent Volume Control, Master Level and 2-Band EQ
- 3 Mic/Line Balanced Inputs with +48V Phantom
- 1 Front Mic Unbalanced Input with Priority
- 2 Stereo Line Auxiliary Inputs



Specifications 1-Zones Operation with Output Attenuator

Model	HSMA-120D PLAY	HSMA-240D PLAY	HSMA-350D PLAY
Rated power	120W	240W	350w
Frequency response	100Hz~16Hz		
Power outputs	100V for each zone; Overall @ 4-16O		
THD	=1%		
S/N Ratio	=80dB		
N. Channels	4 Mic Inputs, 2x Aux Line Inputs, 1x FM/DAB+/BT/USB Built-In Player		
Eq Controls	Low (± 6dB @ 150Hz) High (± 6dB @ 10kHz)		
AUX Output	1000mV		
AUX 1-2 Input	300mV		
Mic 1 Input	15mV ±3mV		
MIC/Line 2/3/4 Inputs	30mV ±3mV (Mic Position); 300mV (Line Position)		
EMC Input	100V		
BT	BT: 5.0 Version with EDR (10m receiving range, without obstacles)		
DAB+	170MHz-240MHz		
FM Tuner	88MHz-108MHz		
USB Audio Format	MP3, WAV, WMA, SBC (FAT32, max. 128GByte)		
Main Power	AC220-240V, 50Hz/60Hz		
Off-Load Consumption	8W		
Full-load Consumption	138W	285W	420W
Auxiliary Power	DC 24V – 10A max.		
Fuse	F2AL		
Unit Size (W×D×H)	482 x 300 x 88 mm (16.8 x 3.5 x 11.8 in)		
Net Weight	6kg	7.05kg	7.4kg
Code	HLV0010	HLV0011	HLV0012



## 2-Zone Mixer Amplifiers



Specifications 2-Zone Operation with Output Attenuator

Model	HDMA-120D PLAY	HDMA-240D PLAY	HDMA-350D PLAY
Rated power	120W	240W	350w
Frequency response	100Hz~16Hz		
Power outputs	100V for each zone; Overall @ 4-16O		
THD	=1%		
S/N Ratio	=80dB		
N. Channels	4 Mic Inputs, 2x Aux Line Inputs, 1x FM/DAB+/BT/USB Built-In Player		
Eq Controls	Low (± 6dB @ 150Hz) High (± 6dB @ 10kHz)		
AUX Output	1000mV		
AUX 1-2 Input	300mV		
MIC 1 Input	15mV ±3mV		
MIC/Line 2/3/4 Inputs	30mV ±3mV (Mic Position); 300mV (Line Position)		
EMC Input	100V		
BT	5.0 Version with EDR (10m receiving range, without obstacles)		
DAB+	170MHz-240MHz		
FM Tuner	88MHz-108MHz		
USB Audio Format	MP3, WAV, WMA, SBC (FAT32, max. 128GByte)		
Main Power	AC220-240V, 50Hz/60Hz		
Off-Load Consumption	8W		
Full-load Consumption	138W	285W	420W
Auxiliary Power	DC 24V – 10A max.		
Fuse	F2AL		
Unit Size (W×D×H)	482 x 300 x 88 mm (16.8 x 3.5 x 11.8 in)		
Net Weight	6kg	7.1kg	7.45kg
Code	HLV0013	HLV0014	HLV0015

## 4-Zone Mixer Amplifiers



Specifications 4-Zone Operation with Output Attenuator

Model	HMMA-120D PLAY	HMMA-240D PLAY	HMMA-350D PLAY
Rated power	120W	240W	350w
Frequency response	100Hz~16Hz		
Power outputs	100V for each zone; Overall @ 4-16O		
THD	=1%		
S/N Ratio	=80dB		
N. Channels	4 Mic Inputs, 2x Aux Line Inputs, 1x FM/DAB+/BT/USB Built-In Player		
Eq Controls	Low (± 6dB @ 150Hz) High (± 6dB @ 10kHz)		
AUX Output	1000mV		
AUX 1-2 Input	300mV		
MIC 1 Input	15mV ±3mV		
MIC/Line 2/3/4 Inputs	30mV ±3mV (Mic Position); 300mV (Line Position)		
EMC Input	100V		
BT	5.0 Version with EDR (10m receiving range, without obstacles)		
DAB+	170MHz-240MHz		
FM Tuner	88MHz-108MHz		
USB Audio Format	MP3, WAV, WMA, SBC (FAT32, max. 128GByte)		
Main Power	AC220-240V, 50Hz/60Hz		
Off-Load Consumption	8W		
Full-load Consumption	138W	285W	420W
Auxiliary Power	DC 24V – 10A max.		
Fuse	F2AL		
Unit Size (W×D×H)	482 x 300 x 88 mm (16.8 x 3.5 x 11.8 in)		
Net Weight	6.1kg	7.15kg	7.5kg
Code	HLV0016	HLV0017	HLV0018



# 2-Zone Mixer Amplifiers

# 2-Zone Mixer Amplifiers

## HCMA-PLAY SERIES

code J043J

### 350W 2-Zones Integrated Mixer Amplifier with USB/FM/BT, and Remote Paging

HCMA-PLAY series offers integrated 2-zone PA sound reinforcement solutions, with powers ranging from 250W to 350W in total, USB audio player, wireless audio streaming (BT), FM radio and remote paging of the 2 zones. The multi-function display makes the interface user-friendly, allowing use by any end-user. The rear connections include EMC input, Mute, Siren and Chime commands, 70V, 100V and low impedance outputs. Mic inputs have Phantom Power, input sensitivity adjustment and priority assignment. In short, the HCMA series mixer amplifiers enclose in 2 standard 19" rack units (rack mounting ears are included) everything needed for a simple and efficient small-to-medium bi-zone installation.

#### Features

- User-friendly LCD screen
- 70V/100V & Low Impedance Speaker Outputs
- Rated power 350W
- Built in 100V two-zones outputs
- Mic 1 with ¼" Jack on front panel
- Mic 2-4 with XLR, +48V Phantom Power, and independent gain adjustment
- 4 Audio Source Modes (AUX, BT Audio Streaming, FM Radio, USB player con remote control)
- Individual volume control for Mic1-4 and Aux input 1-2
- Support 2 remote paging stations (HCMA-PLAY MIC, optional)
- Chime/Siren/Mute inputs with gain adjustment
- EMC/MIC1/Remote Microphone/Short Circuit adjustable priority
- Overload, Clipping, Short circuit and temperature protection
- 19" rack mount handles (included)
- DC24V Auxiliary Power Supply



#### Specifications

Rated output power	350W
Input sensitivity	MIC1: 5mV (unbalanced 6.35mm interface input) MIC2-MIC4: ±5mV (balanced XLR input) AUX IN: 300mV ±30mV (unbalanced RCA input) EMC IN: 375mV ±30mV (unbalanced terminal)
Freq. Response	60Hz - 16kHz ±3dB
THD	=1% @ 1kHz
Screen	Multi-functional segmented LCD display
SNR	=75dB
Total volume	Adjust volume from 0 to 32 with number displayed on screen
Audio adjustment range	Bass: 100Hz ±10dB; Treble: 10kHz ±10dB with number displayed on screen
Priority	3-level custom priority, EMC > MIC1 > Remoter Paging
RJ-45 Port	RS-485 Communication Protocol
Phantom Power	+48V ±2V
AUX IN	2 channel AUX IN
EMC IN	1 channel EMC IN
LINE OUT	1 channel LINE OUT: 1V @ 1kHz
USB Connection	Type-B, Female
USB Drive Format	FAT32 format – max 32GByte
Player File Formats	MP3 e streaming BT audio wireless
BT Receiving Distance	10m
BT Standard	BT2.1+EDR
FM Tuner	87.5MHz-108.0MHz
Power Requirement	AC 220-240V/50-60Hz
Fuse	4AL250V
Power Dissipation	700W
Product Size (WxDxH)	420x403x88 mm
Net weight	12.7kg

## HCMA-PLAY MIC

code J044J

### 2 Zones Remote Paging Microphone Base

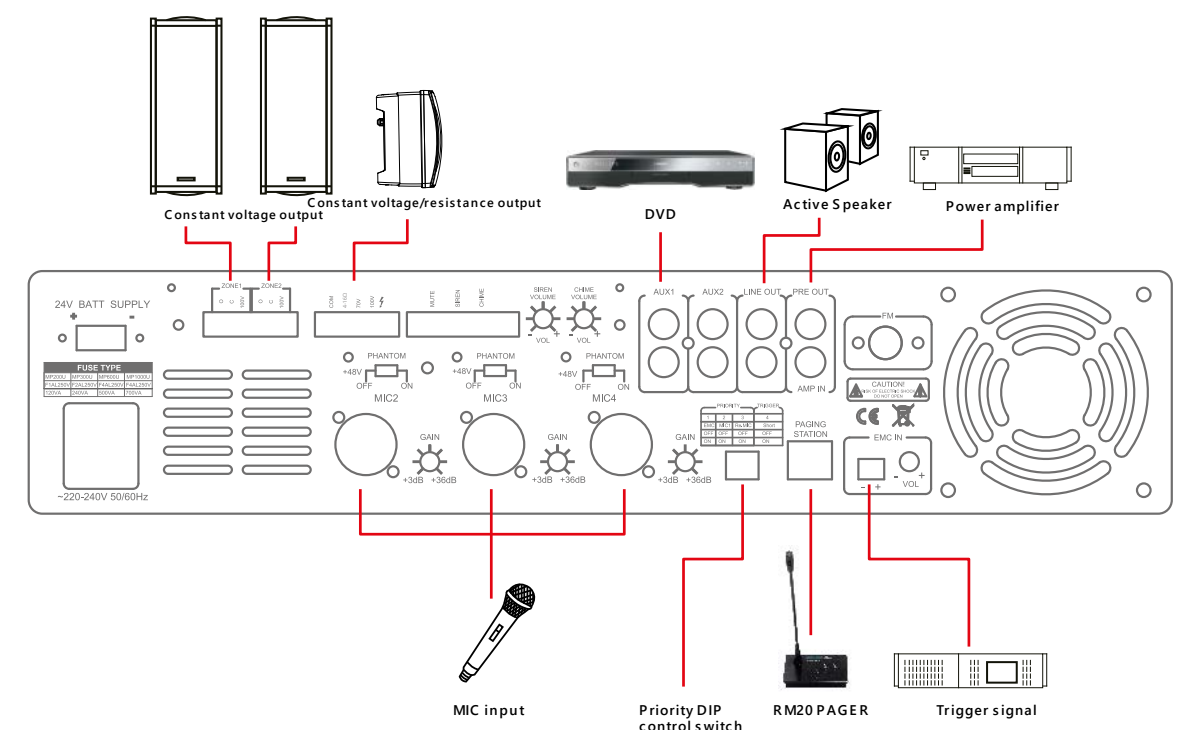
HCMA-PLAY MIC integrates a microphone base with gooseneck microphone, bi-zone control with in-out message ringtone. Connection, through a common CAT5 or CAT6e cable, integrates power supply, control, and audio output, to simplify installation as much as possible. It is also possible to connect more HCMA-PLAY MIC bases, thanks to the RJ-45 link output. Finally, the one-touch-to-talk function greatly facilitates the daily use of the microphone base.

#### Features

- Sturdy and lightweight construction for maximum durability
- RJ-45 interface for power supply & signal transmission
- Built-in chime for paging reminder
- RJ-45 Link Port for cascade connection of multiple microphone bases
- One-touch-to-talk operation for convenient use

#### Specifications

Sensitivity: +/- 10mV  
Frequency Response: 200Hz – 15kHz  
SNR: = 60dB  
RJ-45 : RS-485 Communication Protocol  
Power Supply: Host (Provided by Amplifier unit)  
Size (WxDxH): 40x150x100 mm  
Net Weight: 0,55 kg





# 6-Zone Mixer Amplifiers

# 6-Zone Mixer Amplifiers

## HTMA TOUCH SERIES

6 Zones Mixer Amplifier with Timer, USB, BT and Tuner

HTMA TOUCH series is a line of amplifiers for PA with integrated mixer whose main feature is ease of use. The 4.3" TFT touch display allows weekly programming of playlists, combining USB, SD-Card, FM & AM radio. It also offer BT streaming connection to let you use tablets, mobile phones, and other BT devices. The amplification stage offer powers ranging from 150W to 350W (100V for each zone and the auxiliary output) to fit different venue sizes. Therefore, HTMA TOUCH are all-in-one tools that quickly solve all multi-zone PA needs in medium-sized venues, such as shops, pubs, bars, restaurants and more.

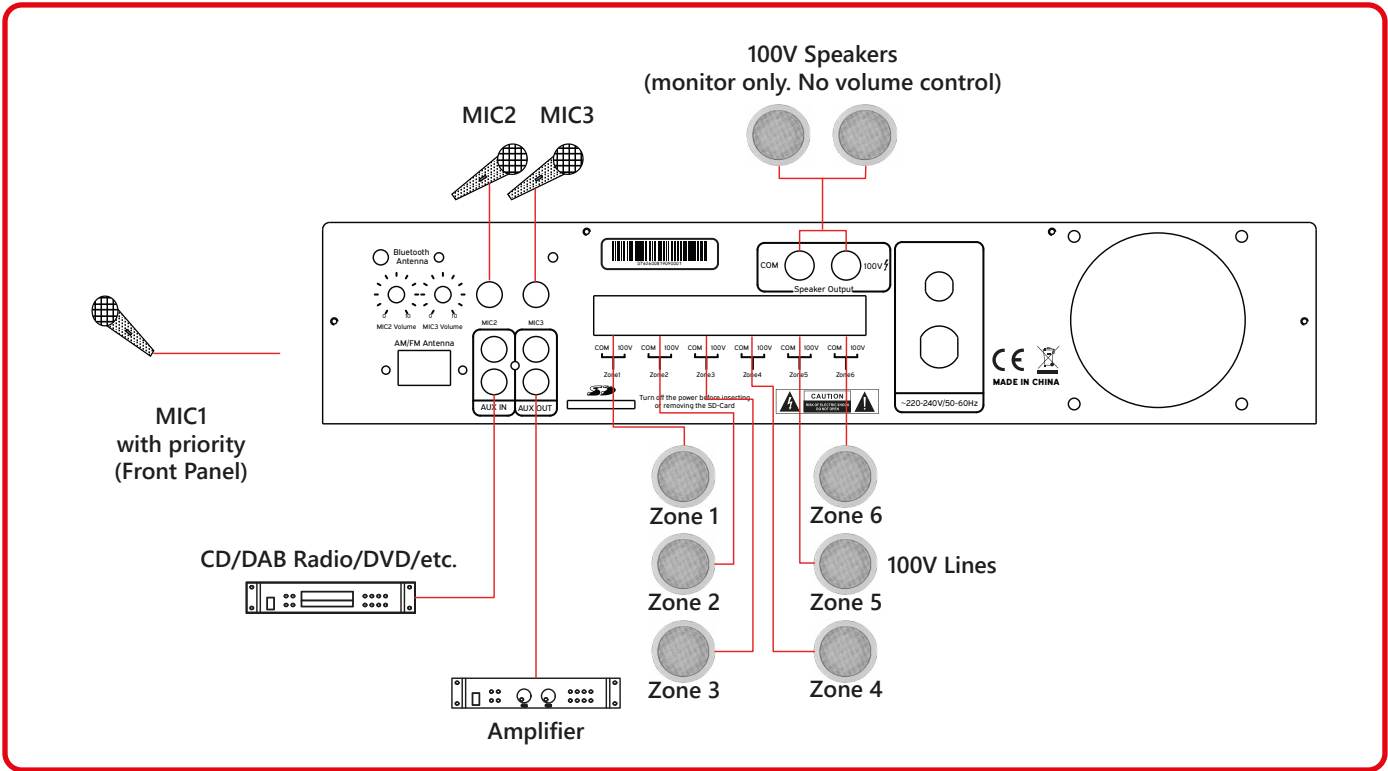
### Features

- 6 zones output with separated switch control
- 4.3" TFT touch screen
- Player with USB, SD-Card, AM & FM Radio, BT Audio Streaming
- Built-in MP3 player with program memory
- Built-in Radio with up to 40 radio channels
- Built-in BT receiver module
- 1 AUX input, 1 Mic input, 1 AUX output
- Separate volume control for MP3/FM/BT, AUX, and Mic inputs
- Bass & Treble tone adjustment, with Master Volume control
- Weekly programmable schedule set with more than 100 daily presets
- Mic input with muting priority
- 100V Power Outputs
- Rack-Mount Kit



### Specifications

Model	HTMA-2506 TOUCH	HTMA-3506 TOUCH
Rate power	250W	350W
Speaker Outputs	100V	
Harmonic Distortion	<0.5% (1kHz, 1/3 rate power)	
AUX Output	100ohm, 1V (0dBV)	
Input	Mic: 600ohm, 8mV ( $\pm 10\%$ ); Line: 10kohm, 300mV ( $\pm 10\%$ ), unbalanced	
Line Freq. response	50Hz-20kHz ( $\pm 3\text{dB}$ )	
Mic Freq. response	40Hz-16kHz ( $\pm 3\text{dB}$ )	
S/N Ratio	Mic: 70dB; Line: 80dB	
2-Band EQ	Bass: $\pm 10\text{dB}$ (100Hz); Treble: $\pm 10\text{dB}$ (10kHz)	
BT Receiving Distance	10m	
BT Standard	BT2.1+EDR	
USB Connection	Type-B, Female	
USB/SD-Card Drive Format:	FAT32 format – max 64GByte	
Player File Formats:	MP, WMF, and BT streaming	
Protection	AC fuse, DC output protection, overload protection	
Power Supply	AC220-240V/50-60Hz	
Fuse	F4AL-250V	
Power Consumption	350W	450W
Unit Size (W×D×H)	418×338×88 mm	
Unit Weight	9,1kg	9,3kg



code J050J	HTMA-2506 TOUCH
code J051J	HTMA-3506 TOUCH



ZEUS-CA SERIES  
Multipurpose Power Amplifier

Helvia Zeus CA series is designed for the world of small-medium commercial audio systems, both on 70V or 100V constant voltage lines, and low-impedance lines from 4 to 16 ohm. It offers 1, 2 and 4 channels Class-D amplifiers with 120W, 240W and 350W RMS powers. Each channel is independent and equipped with its own line transformer, therefore it is possible to choose between 70/100V or 4-16 ohm low-impedance for each of them, offering maximum versatility according to the specific needs of each zone. Each channel is equipped, in addition to volume, Led VU-meter and clip indicator, with gain adjustment on the rear panel. There is also an HPF filter with a cut-off frequency at 400Hz. Both inputs and outputs are balanced with XLR connectors; all power outs are with Phoenix (Europlug) connection. The versions with 1 and 2 channels are also equipped with DC 24V auxiliary power input for any emergency purposes. Helvia paid high attention to safety, reliability and duration over time of these amplifiers. Each channel is equipped with muting system at power on, signal limiter, thermal protection and current limitation. The cooling system with fan speed controlled by internal temperature, is also reinforced thanks to the 19" 2U Rack standard size that increases the thermal dissipation. The quality is not only based on the accurate selection of active and passive components, but also on the quality of raw materials used for line transformers, and in the use of digital processing to offer stability, reliability and high-level sound performance.

Features

- 70V – 100V and 4-16ohm operation
- 2 Unit 19" Rack Standard for maximum heat dissipation
- High-quality components for maximum reliability
- 24VDC Auxiliary Power Supply for EMC purposes
- Full protection system including signal limiter, thermal protection, and current limiting
- Variable-speed fans for quiet and efficient cooling



Specifications

1-Channel Multipurpose Power Amplifier

Model	ZEUS 1120CA	ZEUS 1240CA	ZEUS 1350CA
100V RMS Output power	120W	240W	350w
70V RMS Output power	120W	240W	350w
4-16O RMS Output Power	120W @ 4O	240W @ 4O	350W @ 4O
Input sensivity	1V/Gain max @ 0.775V		
Input impedance	20KO ±10%		
HPF Filter	ON = 400Hz-20kHz; OFF = 80-20kHz		
Frequency response	80-20kHz/ 400Hz-20kHz		
THD (1W @ 1KHZ)	< 0.05%		
Damping factor	>300 @ 100 Hz		
Crosstalk	>70dB		
S/N Ratio	>85dB		
Amplifier Class	D		
Power requirement	AC 230V/DC24V		
Power Consumption (Average/Peak)	150W	300W	440W
Input connector	3-Pin Female XLR		
Output connector	5-Pin Phoenix		
Ch Output Connectors	3-Pin Male XLR		
Coding	Temperature controlled fan		
Dimensions (WxDxH)	484x400x88 mm (19.0 x 15.7 x 3.5 in)		
Rack mount	2x 19" Rack Units		
Net Weight	6.7kg	8.7kg	9.4kg
Code	HLV0001	HLV0002	HLV0003

2-Channel Multipurpose Power Amplifier

Model	ZEUS 2120CA	ZEUS 2240CA	ZEUS 2350CA
100V RMS Output power	2x120W	2x240W	2x350w
70V RMS Output power	2x120W	2x240W	2x350w
4-16O RMS Output Power	2x120W @ 4O	2x240W @ 4O	2x350W @ 4O
Input sensivity	1V/Gain max @ 0.775V		
Input impedance	20KO ±10%		
HPF Filter	ON = 400Hz-20kHz; OFF = 80-20kHz		
Frequency response	80-20kHz/ 400Hz-20kHz		
THD (1W @ 1KHZ)	< 0.05%		
Damping factor	>300 @ 100 Hz		
Crosstalk	>70dB		
S/N Ratio	>85dB		
Amplifier Class	D		
Power requirement	AC 230V/DC24V		
Power Consumption (Average/Peak)	300W	600W	880W
Input connector	3-Pin Female XLR		
Output connector	5-Pin Phoenix		
Ch Output Connectors	3-Pin Male XLR		
Coding	Temperature controlled fan		
Dimensions (WxDxH)	484x400x88 mm (19.0 x 15.7 x 3.5 in)		
Rack mount	2x 19" Rack Units		
Net Weight	9.6kg	11.7kg	13kg
Code	HLV0004	HLV0005	HLV0006

4-Channel Multipurpose Power Amplifier

Model	ZEUS 4120CA	ZEUS 4240CA	ZEUS 4350CA
100V RMS Output power	4x120W	4x240W	4x350w
70V RMS Output power	4x120W	4x240W	4x350w
4-16O RMS Output Power	4x120W @ 4O	4x240W @ 4O	4x350W @ 4O
Input sensivity	1V/Gain max @ 0.775V		
Input impedance	20KO ±10%		
HPF Filter	ON = 400Hz-20kHz; OFF = 80-20kHz		
Frequency response	80-20kHz/ 400Hz-20kHz		
THD (1W @ 1KHZ)	< 0.05%		
Damping factor	>300 @ 100 Hz		
Crosstalk	>70dB		
S/N Ratio	>85dB		
Amplifier Class	D		
Power requirement	AC 230V		
Power Consumption (Average/Peak)	600W	1200W	1760W
Input connector	3-Pin Female XLR		
Output connector	5-Pin Phoenix		
Ch Output Connectors	3-Pin Male XLR		
Coding	Temperature controlled fan		
Dimensions (WxDxH)	484x400x88 mm (19.0 x 15.7 x 3.5 in)		
Rack mount	2x 19" Rack Units		
Net Weight	13.5kg	17kg	20kg
Code	HLV0007	HLV0008	HLV0009



MURA SERIES

Volume attenuator for 70-100V speakers + Off, with auxiliary line and 24V alarm control

The MURA 3 Series in-wall mount Volume Controllers are designed to be installed within normal 503-standard wall boxes (108x53,5x-74mm, not supplied). They allow control of the volume with, respectively, 4 positions + off for MURA 305, and 11 positions + off for MURA 310/330/360. The max. nominal powers range from 2.5W to 30W in case of 70V lines; and 5W to 60W for 100V lines. Each position attenuates the overall level from 5dB to 10dB, depending on the model. However, all they provide, in addition to the normal 70-100V audio line, the 70-100V auxiliary line at maximum level (the attenuation does not operate in this case but passes the whole signal to the speaker) and the 24V relay input for switching between normal and auxiliary line in case of alarm. The MURA 3 Series is supplied with a front cover plate (white) and is compatible with BTicino® Matix® 3P plates.

Features

70V and 100V Constant Voltage Audio Line Operation  
Auxiliary 70-100V Line with 24V relay control  
Front Cover Included (White)

Specifications

2XX series

Model	MURA 205	MURA 210	MURA 230	MURA 260
Nominal Power @ 100V	5W	10W	30W	60W
Nominal Power @ 70V	2.5W	5W	15W	30W
Control	4 Positions +Off	11 Positions +Off	11 Positions +Off	11 Positions +Off
Step attenuation	10dB	5dB	5dB	5dB
Total attenuation	40dB	55dB	55dB	55dB
In-Wall Mount Box	80 x 80 x 48 mm (Included) - 3.15 x 3.15 x 1.89 in			
Dimensions (WxDxH)	82 x 30 (max.) x 82 mm - 3.23 x 1.18 (max.) x 3.23 in			
Net Weight	80 g - 0.18 lbs.	160 g - 0.35 lbs.	170 g - 0.37 lbs.	180 g - 0.40 lbs.
Code	J756J	J757J	J758J	J759J



3XX series

Model	MURA 305	MURA 310	MURA 330	MURA 360
Nominal Power @ 100V	5W	10W	30W	60W
Nominal Power @ 70V	2.5W	5W	15W	30W
Control	4 Positions +Off	11 Positions +Off	11 Positions +Off	11 Positions +Off
Step attenuation	10dB	5dB	5dB	5dB
Total attenuation	40dB	55dB	55dB	55dB
In-Wall Mount Box	503 Standard - 108 x 53,5 x 74 mm - 4.25 x 2.10 x 2.91 in (not Included)			
Front cover	White (included)			
Dimensions (WxDxH)	120 x 20 (max.) x 84 mm - 4.72 x 0.79 (max.) x 3.30 in			
Net Weight	80 g - 0.18 lbs.	160 g - 0.35 lbs.	170 g - 0.37 lbs.	180 g - 0.40 lbs.
Code	J752J	J753J	J754J	J755J



## HCA-40 PLAY 2x20W Mini Digital Amplifier with BT

code J055J

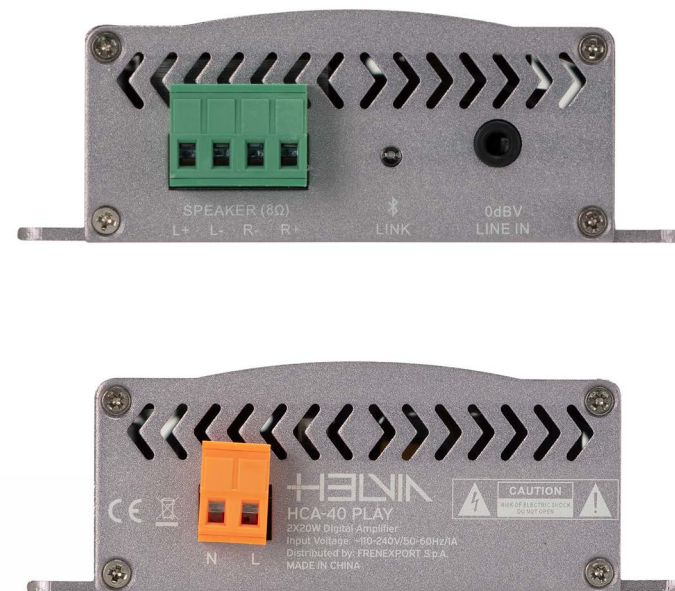
This power amplifier is designed for recessed wall mounting in all those small installations where music or other audio content is required, and a 70V or 100V line is not requested. HCA-40 PLAY delivers 2x20W @ 4-16ohm in Class-D. This ensures high efficiency, low thermal dissipation and maximum stability. The ease of BT connection makes this small amplifier the right product for hotels, shops, home and much more.

### Features

2x20W Mini Class-D Amplifier  
4-16ohm Speaker Output  
BT & AUX Audio Inputs  
Compact, Sturdy, and Stylish Design  
Aluminum Housing for Efficient Heat Dissipation

### Specifications

- Rated Power: 2x25W
- Maximum power: 2x40W
- Frequency Response: 20Hz~20kHz
- Harmonic Distortion: <0.1%
- S/N Ratio: 82dB
- Static Power Consumption: 0.24W
- Impedance: 4-16ohm
- Input Level: 0dBV (0.775V)
- Input Impedance: >10kohm
- BT Receiving Distance: 10m
- BT Standard: BT2.1+EDR
- Operation Voltage: 100-240Vac / 50Hz
- Unit Size (WxDxH): 125x100x35 mm
- Net Weight: 0.35kg



## HCA-60 PLAY 2x30W Mini Digital Amplifier with USB & BT

code J056J

HCA-60 PLAY delivers 2x30W @ 4-16ohm in a very compact design. The Class-D amplification stage ensures high efficiency, low thermal dissipation and maximum reliability. The USB and BT player with remote control allow audio contents reproduction and makes this amplifier easy to use for any user in installations such as hotels, shops, offices, home, and much more.

### Features

Built-in 2x30W stereo Class D amplifier  
Short-circuit, Overheating, and Overloaded Protection  
Supports wireless Bluetooth 3.0 and USB/SD playing  
Supports Voice Recording and Digital Volume Control  
1 AUX and 1MIC input, 1 AUX output for power extension  
Remote Controller for convenient use  
12-24V DC Power Adapter (Included)  
Portable, Robust and Durable Aluminum housing

### Specifications

- LINE input sensitivity: 310mV
- MIC input sensitivity: 10mV
- Frequency response: 20-20kHz (±3dB)
- Noise: 2mV (Output terminal)
- Distortion: <1%
- Rated voltage: 20V DC
- Rated output power: 2x30W
- Max power consumption: 90W
- USB Connection: Type-B, Female
- SD-Card: SD-Card Slot
- USB / SD-Card Drive Format: FAT32 format – max 32GByte
- Player File Formats: MP3 e streaming audio wireless BT
- Recorder File Format: MP3 (44.1kHz/16bit @ 128Kbps)
- Unit Size (WxDxH): 180x163x55 mm
- Unit Weight: 0.82Kg (Without power adapter)





## HWA-20 PLAY 2x10W Wall-Mount Amplifier with Player and BT

codeJ057J

HWA-20 PLAY is a mini in-wall amplifier capable of delivering 2x10W @ 8ohm. The elegant and functional design offers a simple interface thanks to the large LCD display. The Class-D amplification stage with high efficiency, low thermal dissipation and maximum reliability. The multimedia player with USB port, SD-Card, FM Radio, BT, AUX input and remote control, accepts audio files in MP3, WAV, FLAC and other formats, making this amplifier easy to use in any user in hotels, home environments and more.

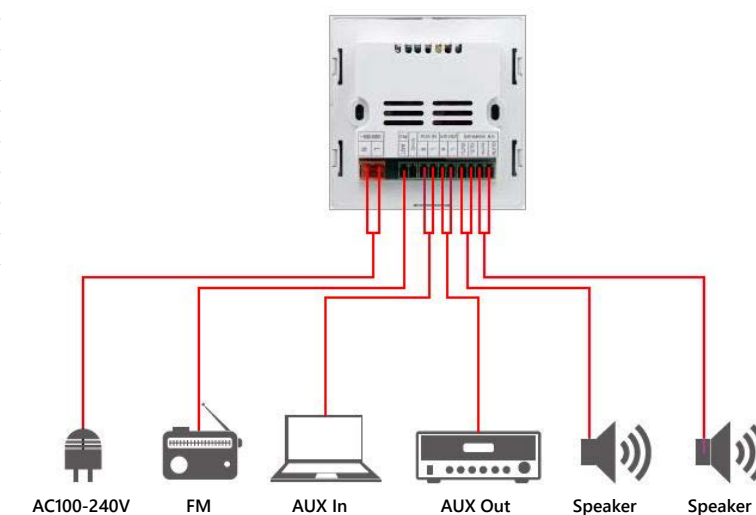
### Features

- Convenient and Efficient Home Music Control Center
- Stylish Design, User-Friendly Interface with LCD Display and remote control
- Built-in 2x10W stereo Class D amplifier
- Short-circuit, Overheating, and Overloaded Protection
- Multi Player Function with FM Tuner, USB, SD-Card, BT, AUX
- Support MP3, WAV, FLAC and other audio formats
- Adjustable sensitivity for AUX Input
- FM radio with auto or manual channel receiving, and up to 20 user-stored channels
- AUX Output for Multiple Unit Linking
- Wide Voltage Input from 100 to 240VAC, 50/60Hz



### Specifications

Power input	100-240Vac
Output power	2x10W @ 8ohm
Total harmonic distortion	≤0.03% (1KHz, 1W, 8ohm)
Signal-to-noise ratio	>81dB
Frequency response	20Hz~20kHz
Sensitivity of auxiliary input	1.0V/500mV (adjustable)
Audio format	MP3, WAV, FLAC, etc.
Bluetooth	BT2.1+EDR
Storage type	USB, Micro SD-Card
Unit Size (WxDxH)	86×86×38 mm
Unit Weight	135g





## Multimedia Player

### OMNIS-100 Multi Media Player

code HLV0021

The HELVIA OMNIS-100 Multi Media Player is a device that encloses the concept of "All in One" concerning audio reproduction given the multiple connection possibilities and the functions with which it is equipped. OMNIS-100 can be connected directly to the Spotify streaming service and can also access countless Web Radio stations. The device also features the "BT Audio Streaming" function which allows wireless connection to smartphones, tablets or laptops and also a DAB/DAB+/FM tuner with RDS function for additional information on radio stations. The Wi-Fi antenna or LAN connection allows streaming audio playback in large environments and remote control via smartphone or tablet using the UNDOK Android/iOS App. Remote control for OMNIS-100 can also be done with the handy remote control supplied. The USB port located on the front panel allows audio playback of files in mp3 format through the use of external USB flash drives and the analog and digital connections located on the rear panel such as for example the Coaxial, Optical and RCA stereo outputs allow connection with numerous external devices. The 2.4" TFT color display, the elegant cabinet with laser engraved screen printing and the 4 rubber feet make OMNIS-100 an important element for any Hi-Fi system while the supplied metal fins allow easy mounting on racks of 19" for professional installations in commercial activities such as Hotels, Resorts, Pubs Bars, Etc.. HELVIA OMNIS-100 really represents the "All in One" concept.

#### Features

Direct connection to Spotify streaming service  
Access to countless Web Radio stations  
"BT Audio Streaming" function for wireless connection to smartphone or laptop  
DAB/DAB+/FM tuning with RDS function for additional radio station information  
Wi-Fi antenna and LAN connection for audio streaming playback in large environments  
Remote control via Smartphone or Tablet using the UNDOK Android/iOS App  
Wireless control via supplied remote control  
USB port for audio playback of files in mp3 format using external USB flash drives  
Coaxial, Optical and stereo RCA outputs for connection to a variety of external devices  
2.4" TFT color display  
Metal cabinet and laser engraved silkscreens  
Supplied metal fins for easy 19" rack mounting  
External power supply (AC 100-240V)

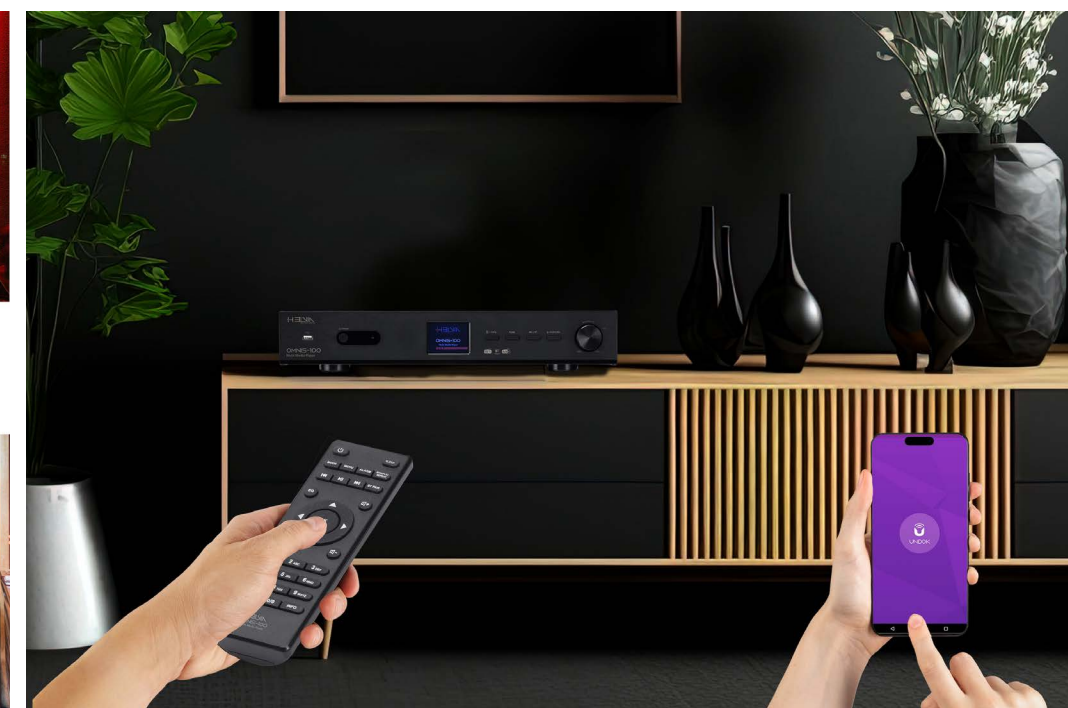


## Multimedia Player



#### Specifications

- Display: 2.4", 320 x 240, TFT colour display
- Audio Sources: Internet Radio, Podcasts, DAB/DAB+, FM, BT Audio Streaming, Spotify, USB mp3 Player
- Networks supported: WiFi IEEE 802.11b/g/n wireless; BT Audio Streaming (BT V4.2, Supports A2DP, AVRCP profiles)
- Frequency bands: WiFi : 2.400 - 2.4835 GHz; BT Audio Streaming: 2.4GHz - 2.48 GHz
- Max. radio frequency power: WiFi: <20dBm; BT Audio Streaming: Max. 8dBm
- Encrypted key: WEP, WPA, WPA2 (PSK), WPS
- DAB / DAB+: Band III (174.928 – 239.200 MHz)
- FM: 87.5 – 108.0 MHz, support RDS
- S/N Ratio; =70dB
- Input Sensitivity: 800mV
- Frequency Response: 20Hz-20KHz(±3dB)
- USB: Connector Type-A, Female; FAT32 format – max 128 GByte; Recognized file format: Mp3; Max 8 Subdirectory - Max 5000 file in each Directory
- Remote Control Power Supply: 2 x 1,5V AAA battery
- Standby mode power consumption: <1,0W
- Networked standby mode power consumption: <2,0W
- Operating temperature: 0° C - 35° C
- Connections: USB port (for music playback), Optical out socket, COAXIAL out socket, RCA Line out socket, Ethernet RJ45 10/100 LAN socket, DC IN power supply socket (5,5mm)
- Digital Audio Sample Rate: 48kHz
- Power Supply Input voltage / AC frequency: AC 100-240V / 50/60 Hz
- Power Supply Output Voltage/ Current / Power: DC 5,0V / 1,5A / 7,5W
- Product Size (WxDxH): 430x303x68 mm - Product Weight: 2,9Kg





DEKO SERIES  
Pair of 2.5" full-range compact loudspeaker

This full-range speaker for the fixed-installation market is the result of the perfect combination of elegant and refined design, compactness, and superior quality sound. It is made for any indoor environment (available in both black and white color) and it adapts to any domestic or non-domestic installation solution, such as multi-room audio systems, meeting sales, shops. DEKO-25 compact series speakers feature a 2.5" (63mm approx.) full-range transducer with high dynamic excursion, and reinforced paper cone. RMS power is 30W @ 8ohm. The Deko-25T model integrates a 100V line transformer for quick integration into constant voltage lines. The 100V power tap is 6W@100V. The compact size of this woofer let us make a speaker of only 87x94x94cm, able to integrate into any interior without compromising sound quality. Whether it is a domestic environment or a bar or shop, if combined with one or more subwoofers with a cut around 100-150Hz, it is possible to obtain an excellent result in terms of coverage and audio quality.



Features

- Full-range speaker
- Compact and lightweight, suitable for any environment
- Bracket with horizontal and vertical angle adjustable by +/- 30°
- Superior sound with wide coverage
- Easy installation thanks to the included bracket



Specifications

Model	DEKO-25T
Power RMS/Peak (100V)	6W/30W
Frequency response	100Hz – 20kHz (±3dB)
Sensitivity	90dB (1W@1m)
Coverage	175° (HxV)
Woofer	2.5" Paper Cone, Full-Range
Housing	ABS with Metal Grille
Speaker size (WxDxH)	94x87x94mm (bracket not included); 94x87x135 (max., with bracket, 0° angle)
Bracket size (WxDxH)	55x55x45mm
Speaker weight	0.503kg (single speaker with bracket)

Built-in 100V line transformer

code J258J	DEKO-25TWH
code J259J	DEKO-25TBK

Impedance 8Ohms

code HLV0019	DEKO-25WH
code HLV0020	DEKO-25BK



**LIDO SERIES**  
Waterproof 2-way Passive Wall-Mount Speaker Pair

LIDO series is specifically designed for both indoor and outdoor applications in projects with constant voltage or low impedance systems. Thanks to the IP65 protection rating, to the PP woofers, to the UV-resistant PP cabinets, to the stainless-steel metal parts, and to the aluminum grille, these speakers do not fear the rigors of exposure to atmospheric agents. The high excursion custom transducers guarantee a clear and defined sound, always providing a higher audio quality even at high sound pressures. The power-tap selector allows you to select 3 powers and adapt the speaker to 100V or low impedance systems. The C-bracket allows you to adjust the horizontal (+55°/-55°) and vertical position (+20°/-20°).

**Features**

- 2-Way Passive system with 20W RMS Power
- IP65 Protection Rating for Outdoor/Indoor Applications
- UV-Resistant PP Housing
- Built-in 100V Line Transformer
- Power Tap Selector for 100V or low-impedance systems
- Horizontal and Vertical adjustable C-Bracket
- Paintable Housing and Grille



**Specifications**

Model	LIDO-420	LIDO-530	LIDO-640
Speaker type	4" 2-Way-Passive	5.25" 2-Way-Passive	6.5" 2-Way-Passive
IP Rating	IP65		
RMS Power (@ 8ohm)	20W	30W	40W
70V Powers	2.5W – 5W – 10W	3.75W – 7.5W – 15W	5W – 10W – 20W
100V Powers	5W – 10W – 20W	10W – 20W – 30W	20W – 30W – 40W
Frequency Response (-10dB)	90Hz-18kHz	80Hz-18kHz	65Hz-18kHz
Sensitivity (1w@1m)	88dB	90dB	92dB
Impedance	8 ohm		
Woofers	4" (103mm), PP cone	5.25" (135mm), PP cone	6.5" (165mm), PP cone
Tweeter	0.5" (13mm), Mylar dome		
Housing	UV-Resistant PP, paintable		
Bracket	C-Bracket with Pan/Tilt adjustable angle and stainless steel screws		
Grille	Perforated aluminum, powder coated paint, acoustic transparent foam inside, paintable		
Product Size (WxDxH)	138 x 120 x 220mm	175 x 156 x 280mm	205 x 182 x 328mm
Speaker Weight (single unit)	1.432 kgs	2.246 kgs	3.475 kgs

**Black color**

code J843J	LIDO-420 WPB
code J845J	LIDO-530 WPB
code J847J	LIDO-640 WBP

**White color**

code J842J	LIDO-420 WPW
code J844J	LIDO-530 WPW
code J846J	LIDO-640 WPW





## ESTRO SERIES 2-way Professional Passive Speaker

ESTRO 2-way Passive Series speakers are part of a wider range of HELVIA product line. It offers 5 models, from 6.5" to 15". These speakers have been designed to be lightweight, reliable and offer high-level sound in both fixed installation and portable applications. Powers ranging from 130W to 350W RMS, selected transducers, advanced housing material are the ingredients wisely combined to offer the best to installers and musicians. ESTRO speakers can be suspended through specific brackets (not included), with eye-bolts (not supplied) and the M8 suspension points, or placed on a speaker stand using the D36mm hole on the bottom.

### Features

- 2-Way Passive System with Bass-Reflex
- Sturdy and Lightweight Propylene Cabinet
- Full-metal Grille and Dark-Grey Color
- 130W RMS @ 8ohms
- High-Excursion Woofers and Precision Compression Drivers
- 90°x 60° Symmetric Horn
- 2x 2-Poles Speakers Connectors
- Handle on Top for easy transport
- 36mm Pole Mount Hole
- 4x M8 Flying points

code J394J	ESTRO 6P
code J395J	ESTRO 8P
code J396J	ESTRO 10P
code J397J	ESTRO 12P
code J398J	ESTRO 15P



### Specifications

Model	ESTRO 6P	ESTRO 8P	ESTRO 10P	ESTRO 12P	ESTRO 15P
Speaker type	6.5" 2-Way Passive	8" 2-Way Passive	10" 2-Way Passive	12" 2-Way Passive	15" 2-Way Passive
Frequency Response [- 10dB]:	70Hz-19kHz	63Hz-19kHz	55Hz-19kHz	50Hz-19kHz	42Hz-19kHz
Sensitivity (1W @ 1m):	90dB	91dB	92dB	95dB	96dB
Max SPL:	110dB	112dB	114dB	119dB	121dB
RMS power:	130W	150W	220W	300W	350W
Impedance:			18ohm		
HF Type - 1" exit Compression Driver:	1" v.c.	1" v.c.	1.35" v.c.	1.35" v.c.	1.75" v.c.
Horn Type:			Symmetric		
Directivity (HxV)			90°x60°		
Crossover Frequency:	5kHz	4.6kHz	4kHz	3.2kHz	2.8kHz
LF Diameter:	6.5" - 1.5" v.c.	8" - 1.5" v.c.	10" - 2" v.c.	12" - 2.36" v.c.	10" - 2" v.c.
Input:			1 x 2-Poles Speakon connector		
Out:			1 x 2-Poles Speakon connector		
Housing material:			Polypropylene, Dark Grey		
Grille material and thickness:			Steel, 1.2mm		
Flyable:			4x M8 (one on each side)		
Handles:	1 on top	2 on sides	1 on top; 2 on sides	1 on top; 2 on sides	1 on top; 2 on sides
Pole Mount:			Standard Ø36mm		
Stage Monitor Use Angle:			30°and 45°		
Speaker size (WxDxH):	220x210x368mm	270x275x492mm	302x310x529mm	358x356x613mm	425x385x698mm
Speaker Net Weight:	5.2kg	7kg	10.5kg	14.2kg	17.2kg

## ESTRO SERIES Wall-Mount Bracket for ESTRO series

### Features

- Horizontal Position with Angle Adjustment; Fixed Vertical Position.
- Angle Adjustment (Horizontal Loudspeaker): 5 Positions with Max 60° (-30°, -15°, 0°, +15°, +30°)
- Strong construction with 2.5 mm thickness steel



### Specifications

Model	ESTRO 6P BRACKET	ESTRO 8P BRACKET	ESTRO 10P BRACKET
Load Capacity:	30kg	40kg	50kg
Bracket Size (WxDxH):	404 x 195 x 66 mm	522 x 261 x 75 mm	557 x 282 x 104 mm
Bracket Weight:	1,17 kg	1,53 kg	2,53 kg
Bracket and Accessories Weight:	1,8 kg	2,4 kg	3,25 kg

code E872E	ESTRO 6P-BRACKET
code E873E	ESTRO 8P-BRACKET
code E874E	ESTRO 10P-BRACKET





HCMS WPW SERIES  
Waterproof Column Speaker – White

HCMS WP column speakers combine slim and elegant look with sturdiness and quality of materials for both indoor and outdoor applications. Housing, grille and transducers are all made of waterproof and anti-rust materials, to increase overall durability, even in hostile environments where humidity and saltiness attack strongly. The 2-way design (with 3" woofer + 1" tweeter) and the quality of the transducers guarantee good sound quality; the power selector facilitates installation with any type of constant voltage or low impedance line. The wall-mounting bracket allows Pan/Tilt adjustment. They are available in two size/power, and Black or White finish.

Features

- Waterproof Design (IP66), suitable for outdoor and indoor applications
- Slim and elegant appearance
- 2-Way Design with 3" woofer and 1" Tweeter for High-Resolution Sound
- Suitable for 70V/100V and Low-Impedance Lines
- Multifunctional Mounting bracket with Pan/Tilt Adjustment
- Power Tap Selector for Quick Choice of Input Mode
- Aluminum Housing and Grille with Anti-Rust, Dustproof and Anti-Pollution Treatment
- Waterproof Speakers in PP for Maximum Durability
- Pure Copper Wire Line Transformer for High-Quality Audio

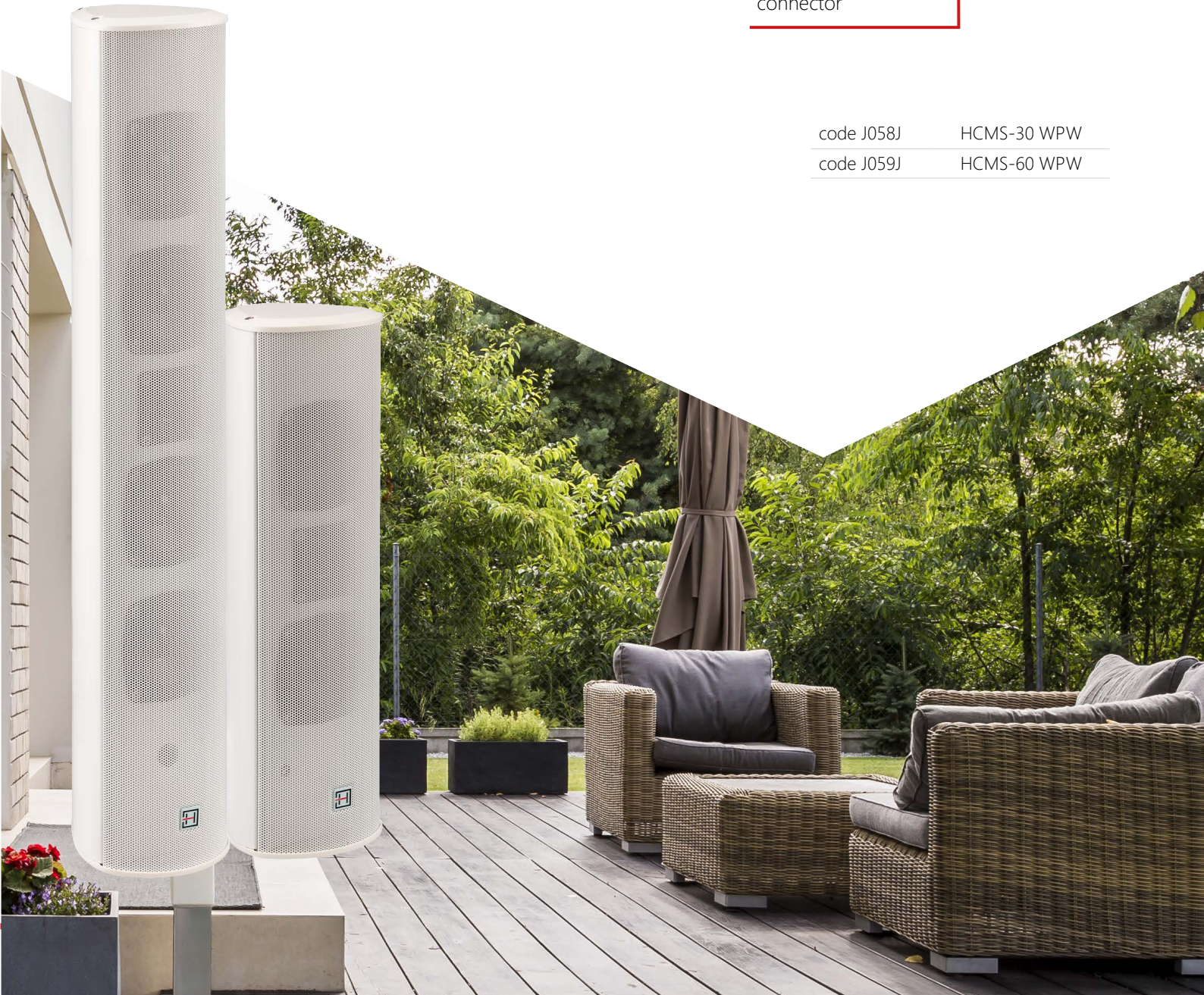
Specifications

Model	HCMS-30 WPW	HCMS-60 WPW
Speaker Unit	2x3", 1" x1"	4x3", 1x1"
Rated Power (RMS)	30W	60W
70V Power Tap	1-2-4-8-15W	1-6-10-20-30W
100V Power Tap	2-6-20-40-30W	6-10-20-40-60W
Freq. Response	140Hz-20kHz	140Hz-20kHz
Sensitivity (1W @ 1m)	87±3dB	89±3dB
Max SPL (@ 1m)	102±3dB	107±3dB
Unit Size (L×W×H)	376×109×102mm	606×109×102mm
Unit Weight	3kg	4kg



waterproof  
connector

code J058J	HCMS-30 WPW
code J059J	HCMS-60 WPW





GALA SERIES

5.25" Quick-fit Mechanism, Metal-Frame Ceiling Speaker

GALA Series offers elegant, reliable and versatile loudspeakers with woofer diameters ranging from 5" to 8", and powers from 3W to 15W RMS. They can be used with standard 70/100V professional amplifiers, and are suitable for any application of music distribution in shops, restaurants, bars, offices, shopping malls, schools, etc. All GALA speakers feature metal frames and grilles, and quick-fit mechanism, to make installation very easy and fast. The built-in line transformers allow the use with 70/100V lines, and offer two power taps to better adapt to different speaker arrangement and amplifier powers. They come in white color, but can be painted in any color.

Features

- Full-Range Loudspeaker
- Metal-Frame Housing
- Built-in 70/100V Line Transformer with 2 powers
- Quick-Fit Mechanism
- Paintable Grille and Frame



Specifications

Model	GALA-56W	GALA-61W	GALA-85W
Speaker type	5.25"	6.5"	8"
Line Voltage:	70V/100V		
Line Transformer:	Built-in, 2 power taps		
RMS Power @ 8ohm:	10W	15W	20W
RMS power:	130W	150W	220W
100W Power Taps:	3W/6W	5W/10W	7.5W/15W
70V Power Taps:	1.5W/3W	2.5W/5W	3.75W/7.5W
Frequency Response (-10dB):	88Hz-17kHz	87Hz-17kHz	85Hz-17kHz
Sensitivity (1W@1m):	86dB	87dB	88dB
Impedance:	8ohm		
Woofer	5.25" (135mm), paper cone	6.5" (166mm), paper come	8" (203mm), paper cone
Housing / Grille:	Metal, Paintable		
IP Rate (speaker installed):	IP42		
Mounting:	Quick Fit system		
Color:	White		
Cutout Size:	Ø 170 mm	Ø 216 mm	Ø 224 mm
Product Size (WxDxH):	Ø 200*60 mm	Ø 246*75	Ø 250*75 mm
Speaker Net Weight:	0,8 kg	0,9 kg	1,25 kg

code J848J	GALA-56W
code J849J	GALA-61W
code J850J	GALA-85W

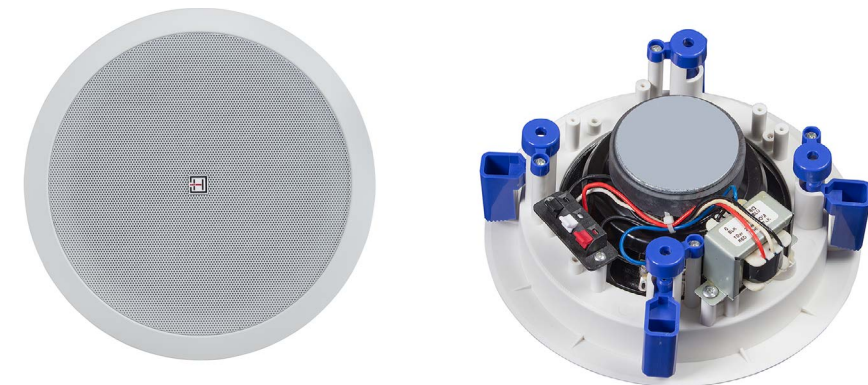
GALA X SERIES

5.25" 2-Way Coaxial Ceiling Speaker

GALA X Series offers powerful and accurate coaxial loudspeakers with woofer diameters ranging from 5,25" to 8", and powers from 20W to 40W RMS. They can be used with standard 70/100V professional amplifiers, and provide transparent and brilliant sound. They are therefore suitable for any application of music distribution at higher volume levels. The housing of GALA X speakers is made of high quality ABS. They also feature 0.5" Mylar-dome tweeters, polypropylene enforced woofers, and aluminum removable grille, which make these speakers suitable for humid environments. Installation is very easy, thanks to the quick mounting system with 4 screws. These screws are hidden behind the grill, and offer an elegant and minimalist design. The built-in line transformers allow the use with 70/100V lines, and offer two power taps to better adapt to different speaker arrangement and amplifier powers. They come in white color, but can be painted in any color.

Features

- 2-Way Coaxial Loudspeaker
- Suitable for Humid Environments
- High Excursion Polypropylene Woofer
- Mylar-dome Precision Tweeter
- Built-in 70/100V Line Transformer
- Quick Mounting System
- Paintable Grille and Frame

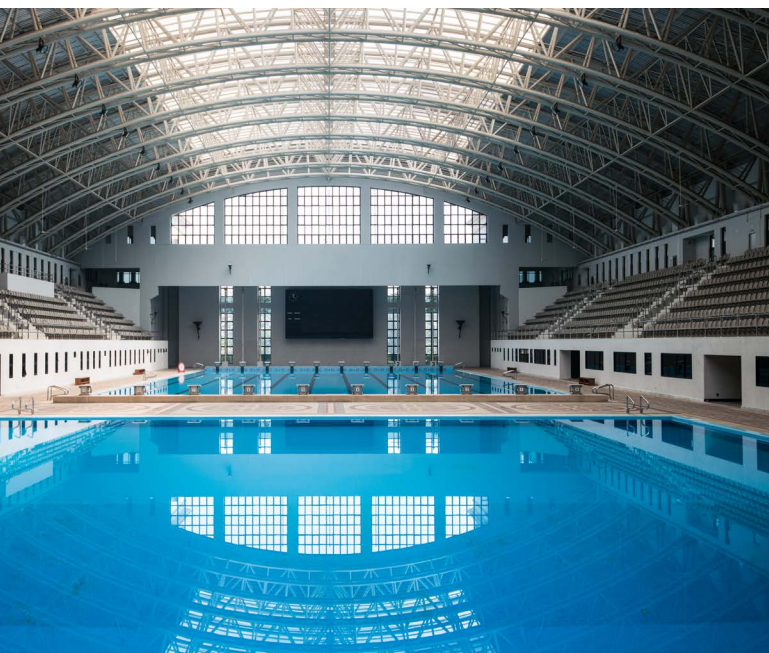


Specifications

Model	GALA-50XW	GALA-630XW	GALA-840XW
Speaker type	2-Way Passive, Coaxial		
Line Voltage:	70V/100V		
Line Transformer:	Built-in, 2 power taps		
100V Power:	10W/20W	15W/30W	20W/40W
70V Power:	5W/10W	7.5W/15W	10W/20W
Frequency Response (-10dB):	80Hz-18.5kHz	67Hz-18.5kHz	55Hz-18.5kHz
Sensitivity (1W@1m):	87dB	88dB	89dB
Woofer	5.25" (135mm), PP cone	6.5" (165mm), PP cone	8" (203 mm), PP cone
Tweeter:	0.5" (13mm), Mylar dome		
Housing:	PP, paintable		
IP Rate (speaker installed):	IIP54		
Mounting:	Quick mounting system with 4 screws		
Grille:	Perforated steel with acoustic transparent foam inside, paintable		
Color:	White		
Cutout Size:	Ø 172 mm	Ø 202 mm	Ø 246 mm
Product Size (WxDxH):	Ø 203 x 90 mm	Ø 233 x 95 mm	Ø 276 x 105 mm
Speaker Net Weight:	1.0 kg	1.26 kg	1.77 kg

code J851J	GALA-520XW
code J852J	GALA-630XW
code J853J	GALA-840XW





## Low Impedance Ceiling Speakers

### ONDA SERIES

#### 5.25" 2-Way Hi-Fi Low-Impedance Coaxial In-Wall/In-Ceiling Speaker

ONDA in-wall speaker series is born to satisfy all those indoor installations where sound pressure and quality higher than normal 70/100V systems are requested. The ONDA speakers are all low-impedance (8ohm), coaxial, with Kevlar woofers, silk-dome tweeters, precision crossovers; essentially true 2-way speakers for professional applications, but ceiling/wall mount. The look of the front panel is minimalist and captivating, and reminds recording studio monitor. The frame-less design, with black ABS frame and white magnetic grids, makes the ONDA speakers extremely discreet. Finally, the grids can be repainted to make them even less visible.

#### Features

- 2-Way Hi-Fi Coaxial Low-Impedance Loudspeaker
- Frame-less Design with Magnetic Grille
- Quick-Fit Mounting System with 4 Screws
- High Excursion Kevlar Woven Cone Woofers
- Built-In Precision Passive Crossover
- +/-2dB High-Frequency Attenuation Selector



#### Specifications

Model	ONDA-540TFW	ONDA-660TFW	ONDA-880TFW
Speaker type	5.25" 2-Way Passive, Coaxial	6.5" 2-Way Passive, Coaxial	8" 2-Way Passive, Coaxial
Frequency Response (-10dB):	65Hz-20kHz	60Hz-20kHz	45Hz-20kHz
Sensitivity (1W@1m):	91dB	93dB	95dB
RMS Power:	40W	60W	80W
Impedance:	8 ohm		
Woofers:	5.25" (135mm), Kevlar Woven Cone	6.5" (165mm), Kevlar Woven Cone	8" (203mm), PP cone Kevlar Woven Cone
Tweeter:	0.76" (20mm), Silk Dome		
High-Freq. Attenuator:	2-position switch (0dB/-2dB)		
Housing:	Housing: ABS		
IP rate (speaker installed):	IP54		
Mounting:	Quick mounting system with 4 screws		
Grille:	Frameless Design, Magnetic Mount, Perforated steel with acoustic transparent foam inside, paintable		
Color:	Black Housing / White Grille		
Cutout Size:	Ø 194 mm	Ø 208 mm	Ø 252 mm
Product Size (WxDxH):	Ø 232 x 88 mm	Ø 248 x 97 mm	Ø 290 x 108 mm
Speaker Net Weight:	1,23 kg	1,6 kg	2,3 kg

code J854J	ONDA-540TFW
code J855J	ONDA-660TFW
code J856J	ONDA-880TFW



code J857J

## GLOBE-410W 10W Pendant Ceiling Speaker

GLOBE-410W is a speaker designed to be hung with extreme simplicity on ceilings where in any case there are roofs, false ceilings or plasterboard structures, thanks to the low weight (about 700g). The look is elegant, discreet and the sound quality is of a high level thanks to the 4.75" (120mm) custom woofer. The GLOBE-410W integrates a transformer for 70V/100V lines with 2 powers, allowing the speaker to be adapted to different speaker configurations and amplifier powers. Available in white color, but can be painted in any color

### Features

- Loudspeaker for ceilings, false ceilings and plasterboard structures
- 4.75" (120mm) Custom Woofer
- RMS power 10W
- Built-in 70V/100V line transformer with 2 Power Taps
- Extremely Quick and Safe Mounting System
- Paintable structure and grid

### Specifications

- Line Voltage: 70V/100V
- Line Transformer: Integrated, 2 power levels
- Power (RMS): 10W @ 8ohm
- Power Taps: 5W/10W
- Frequency Response: 90-18kHz
- Sensitivity (1w/1m): 91dB
- Woofer Diameter: 4.75" (120mm)
- Housing: ABS, paintable
- Grille: Perforated steel, paintable
- Color: White
- Speaker Size (DxH): 175x180mm
- Speaker Assembly Size (DxH): 175 x 620mm (max) – including stick and cup
- Speaker Weight: 0,75g



code J858J

## GLOBE-560XW 2-Way Open-Ceiling Speaker

Globe -560XW is a speaker designed for hanging on very high ceilings (for example, halls of exhibition centers, shopping malls, etc.), where there are no suspended-ceilings or plasterboard structures. The look is elegant, minimal and the ABS material is of high quality. On rear side, in addition to the Phoenix connections and tap selector, there is a thread for the eyelet screw to which hang on one or more security cables (a steel safety cable with 3mm section and 1m length is supplied). The high level sound quality is assured thanks to the coaxial transducer with 5.25" (135mm) polypropylene woofer and 1" (25mm) Tweeter with Titanium dome. The integrated line transformer allows the use with 70/100V lines and offers 4 powers + low-impedance, to better adapt to different speaker configurations and amplifier powers. Housing finish is white, but can be painted in any color

### Features

- 2-Way Coaxial Loudspeaker
- Suitable for very-high open ceilings
- Coaxial Transducer with 5.25" (135mm) Polypropylene Woofer
- 1" (25mm) Tweeter with Titanium Dome
- 40W RMS Power
- Built-in 70/100V Line Transformer with 4 Power taps + 8ohm
- Extremely Safe Hanging System
- Paintable Housing and Grille

### Specifications

- Speaker Type: 2-Way Passive, Coaxial
- Line Voltage: 70V / 100V
- Line Transformer: Built-in, 4 power taps (+ 8ohm)
- RMS Power: 40W @ 8ohm
- Frequency Response (-10dB): 65Hz-20kHz
- Sensitivity (1w/1m): 90dB
- Woofer: 5.25" (135mm), Polypropylene cone
- Tweeter: 1" (25mm), Titanium dome
- Housing: ABS, paintable
- Mounting: M8 (1 on rear; 1 on side)
- Grille: Perforated steel with acoustic transparent foam inside, paintable
- Color: White
- Product Size (WxDxH): Ø 195 x 250 mm
- Speaker Weight: 2.4 kg





code J751J

## EVOCA 20P 20W 2-Way Projection Speaker for PA Applications

HELVIA EVOCA 20P is high efficiency sound projectors designed to provide good speech intelligibility and background music in a wide variation of applications, and are perfect suited to be used in large 100V broadcast systems such as shopping malls, stations, airports, etc. It is fitted with a 6.5" broadband loudspeaker and the power is adjustable by the integrated 100V line transformer with power taps for 20Watt, 10Watt and 5Watt at 100 Volt. The speaker can be easily mounted to any wall or ceiling by using the stainless-steel mounting bracket. Thanks to the weatherproof treated ABS housing with white weatherproof coated aluminum grill, the speaker has an IP56 Ingress Protection standard, which make it suitable for indoor as well as outdoor installations.

### Features

- High Speech Intelligibility and Sound Quality
- Integrated 100V Line Transformer with 3 power taps
- 6.5inch 2-Way Coaxial Speaker System
- Easily mounted to any wall or ceiling
- IP56 Ingress Protection Standard
- Weatherproof Treated ABS Housing
- Weatherproof Coated Aluminum Grill

### Specifications

- System type: Coaxial 2-Way Speaker
- RMS Power @ 100V: 20W / 10W / 5W
- Impedance: 500Ω / 1kΩ / 2kΩ
- Max SPL: 109
- Frequency Range: 100Hz-20KHz
- Sensitivity: 85dB (1W@1m)
- Low Frequency Woofer: 6.5" PP Cone Woofer
- High Frequency Driver: 0.5" PEI Tweeter
- Ingress Protection Rating: IP56
- Operating Temperature: -20°C to + 60°C
- Construction: ABS
- Mounting: Steel C-Bracket
- Mounting holes: 3x Ø7.5mm (0.03 inch) holes with 30mm (1.2 inch) space
- Front finish: Aluminum Grill
- Color: White
- Dimensions (Ø×D): 177 × 260 mm (6.97 x 10.24 inch)
- Projector Weight: 2 kg – 4.4 lbs.



code J750J

## EVOCA 30H 30W Outdoor Horn Speaker for PA Systems

HELVIA EVOCA 30H is a compact, lightweight and waterproof horn speaker, designed to provide high efficiency and high sound intelligibility with low distortion. The built-in line transformer allows the horn to be connected to 70V and 100V constant voltage or low-impedance lines, and select the power through the rotary dial on the rear cover. The horn can be easily mounted to any wall or ceiling by using the stainless-steel mounting bracket. Thanks to the weatherproof treated plastic housing, the EVOCA 30H has an IP66 Ingress Protection standard, which make it suitable for outdoor installations.

### Features

- IP66 Protection Type
- Built-in 30W/15W/7.5W/3.75W Multi-Tap Transformer
- Adjustable Power Taps with 100V / 70V / 80 Modes
- High Quality Plastic Housing

### Specifications

- Rated Power @ 100V: 30W / 15W / 7.5W / 3.75W
- Rated Power @ 70V: 15W / 7.5W / 3.75W / 1.9W
- Impedance: 8Ω / 333Ω / 666Ω / 1.3kΩ / 2.6kΩ
- Sensitivity: 105 dB (1W/1m)
- Frequency Range: 400Hz ~ 10KHz
- Max SPL: 116.8dB
- Protection Level: IP66
- Color: White
- Horn: Plastic
- Diaphragm: Phenolic
- Magnet: Ferric
- Mounting bracket: Stainless Steel
- Mounting holes: 3x Ø7.5mm (0.03 inch) holes with 30mm (1.2 inch) space
- Horn Size: Ø240 x 303mm (Ø9.45 x 11.93 inch)
- Net weight: 2,3 kg – 5.07 lbs.







**HGNS-30 STONE**  
15W Outdoor Garden Speaker

code J060J

HGNS-30 STONE is a rock-shaped speaker designed for outdoor installations such as parks, gardens, outdoor swimming pools, etc. The housing is weatherproof (IP66) and made of organic resin; the coaxial 5" + 1" PP transducer is designed to withstand rain, sun, humidity, and at the same time provide high quality sound. The nominal power is 15W (30W peak), powerful enough to satisfy many outdoor applications. The built-in 70V/100V line transformer reduces signal loss over long distances, and allows easy parallel connection of multiple speakers.

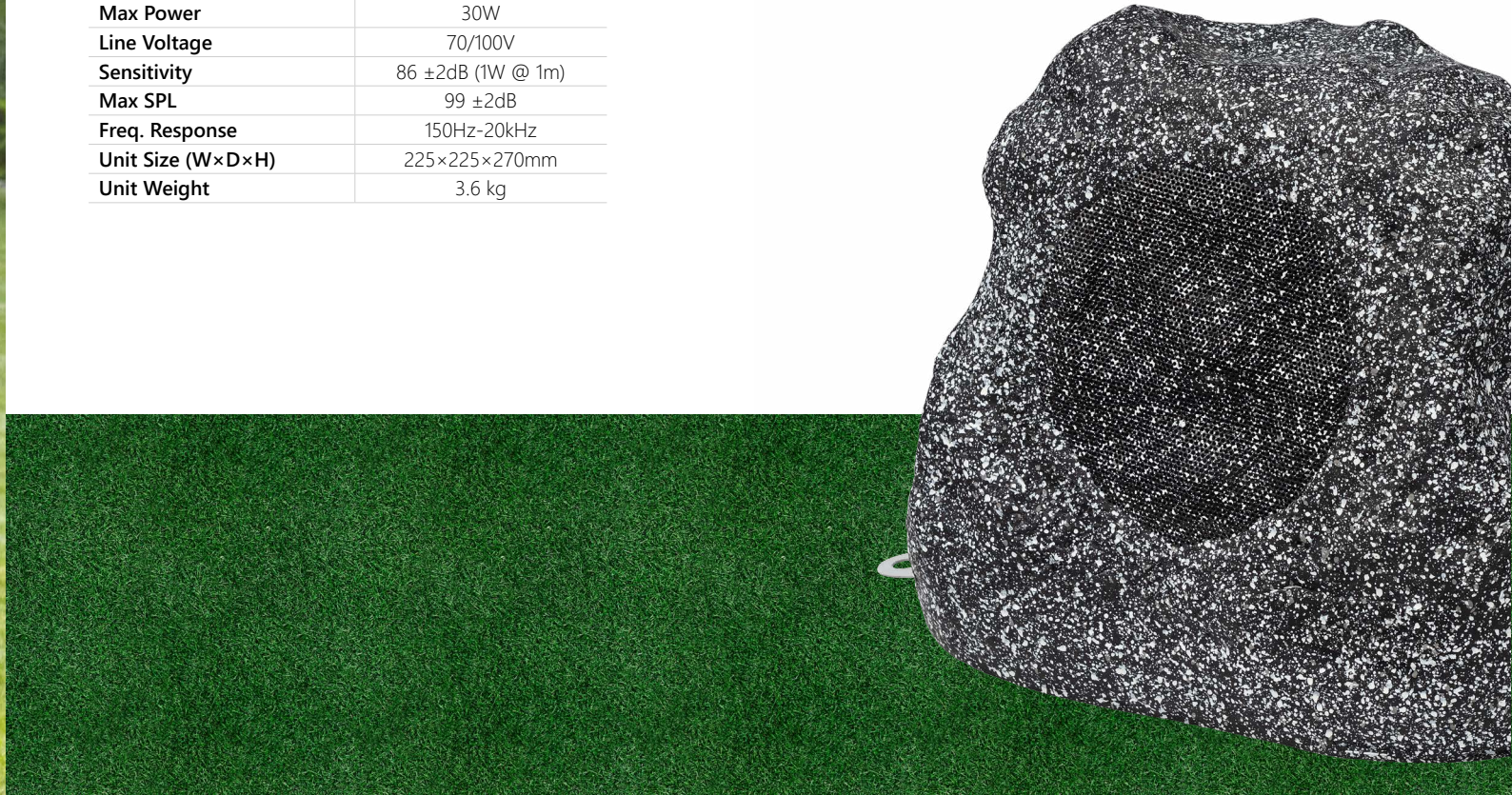
**Features**

- Rock-Shaped Look for Garden Installation
- Heavy Damage-Proof, Organic Resin Housing
- IP66 Waterproof Level
- Coaxial Design with 5.5" Woofer and 1" Tweeter
- 8W-15W (70V) - 15W (100V) Rated Power
- Built-in Transformer



**Specifications**

Transducer	5" + 1" Coaxial
Rated Power	15W
Max Power	30W
Line Voltage	70/100V
Sensitivity	86 ±2dB (1W @ 1m)
Max SPL	99 ±2dB
Freq. Response	150Hz-20kHz
Unit Size (W×D×H)	225×225×270mm
Unit Weight	3.6 kg





## Gooseneck Super-Cardioid

### STILE 280H-SET

#### Professional Gooseneck Super-Cardioid Condenser Microphone with Base

code J545J

STILE 280H SET is composed of a 280mm Mini-shotgun Super-Cardioid Microphone and a solid and robust 750g microphone base in die-cast for maximum stability even in the case of accidental bumps on the microphone. The solid connection of the microphone to the base is assured by a 3-pin CESS Aviation connector with safety thread, which removes any movements of the microphone during placement or direction adjustment. The internal circuit of the base offers outstanding rejection of radio frequency interference (RFI), a switch with electronic touch, and internal 3V or external 10-48V Phantom Power.

The mini-shotgun microphone delivers high-level performance, control, and flexibility for meetings and conferences. Its high-quality cartridge with super-cardioid polar pattern delivers good control in difficult acoustic conditions. The result is superior voice capture and lower pickup of room noise compared to standard cardioid gooseneck microphones. The bend at bottom allows precise placement.

#### Features

Designed for high-quality sound capture in meetings and conferences  
 Ø8mm Condenser Capsule  
 Super-Cardioid Polar pattern  
 50cm (2" ca.) Reference Sound-Seceiving Distance  
 Superior off-axis rejection for maximum gain before feedback  
 RFI-shielding technology offers outstanding rejection of radio frequency interference (RFI)  
 280mm (11,02") long Gooseneck microphone with bend at bottom  
 750g (26.5oz.) heavy base with electronic touch-switch and LED  
 Strong 3-pin Input connector with thread  
 3-pin Mini-XLR output connector  
 3V internal Phantom Power with batteries  
 Accepts external Phantom Power from 3V to 48V  
 Foam windscreen included and 5m cable included

#### Specifications

- Element: Condenser
- Polar pattern: Super-Cardioid
- Gooseneck length: 280mm (11.02")
- Reference sound-receiving distance: 50cm (20" ca.)
- Frequency response: 30Hz - 20kHz
- Sensitivity: -45dB ±1dB (0dB=1V/Pa @ 1kHz)
- Output Impedance: 750
- Max input SPL: 110dB (1kHz @ 1% T.H.D)
- Phantom power requirement: 3V - 48V DC, 0.5mA typical
- Protections: RFI-shielding (mobile phone / electromagnetic / high frequency interference)
- Controls: On/Off LED and Switch with electronic touch
- Batteries: 2x 1.5V AAA-Type Alkaline (not included)
- Input Connector: 0.63" (16mm) CESS Aviation 3 pins with thread (balanced)
- Output Connector: 3-Pin Mini-XLR output connector (balanced)
- Cables: 3-Pin Mini-XLR Female to 3-Pin XLR Male cable, 5m length
- Microphone Size (WxD): 280 x Ø19mm (11.02" x Ø0.75")
- Wind-screen Size (WxD): 150 x Ø22mm (5.90" x 0.87")
- Base Size (WxDxH): 93 x 144 x 50mm (3.66" x 5.67" x 1.97")
- Base Weight: 750g – 26.45oz. (batteries not included)
- Microphone Weight: 53g (1.87oz.)



## Gooseneck Super-Cardioid

### STILE 400H-SET

#### STILE 400H-SET Professional Gooseneck Super-Cardioid Condenser Microphone with Base

code J546J

STILE 400H SET is composed of a 400mm Mini-shotgun Super-Cardioid Microphone and a robust 490g (ca. 17.28oz.) microphone base (batteries excluded) for maximum stability even in the case of accidental bumps on the microphone. The solid connection of the microphone to the base is assured by a 3-pin CESS Aviation connector with safety thread, which eliminates any movements of the microphone. The internal circuit of the base offers outstanding rejection of radio frequency interference (RFI), an electronic switch with LED, and internal 3V or external 10-48V Phantom Power. The mini-shotgun microphone delivers high-level performance, control, and flexibility for meetings and conferences. Its high-quality cartridge with super-cardioid polar pattern delivers good control in difficult acoustic conditions. The result is superior voice capture and lower pickup of room noise compared to standard cardioid gooseneck microphones. The bend at bottom allows precise placement.

#### Features

Designed for high-quality sound capture in meetings and conferences  
 Ø9.7mm (0.38") Condenser Capsule  
 Super-Cardioid Polar Pattern  
 50cm (20" ca.) Reference Sound-Receiving Distance  
 Superior off-axis rejection for maximum gain before feedback  
 RFI-shielding technology offers outstanding rejection of radio frequency interference (RFI)  
 400mm long Gooseneck microphone with bend at bottom  
 490g heavy base with electronic touch-switch and LED  
 Strong 3-pin Input connector with thread  
 Balanced XLR output connector  
 3V internal Phantom Power with batteries or power adapter  
 Accepts external Phantom Power from 10V to 48V  
 Foam windscreen included and 5m cable included

#### Specifications

- Element: Ø9.68mm (0.38") Condenser Capsule
- Polar pattern: Super-Cardioid
- Gooseneck length: 400mm (147.48")
- Reference sound-receiving distance: 50cm (20" ca.)
- Frequency response: 30 Hz - 20 kHz
- Sensitivity: -33 dB ±1 dB (0dB=1V/Pa @ 1kHz)
- Output Impedance: <2000(at=1KHz)
- Max input SPL: 105 dB (1 kHz @ 1% T.H.D)
- Phantom power requirement: 3V - 48V DC, 0.5 mA typical
- Protection: RFI-shielding (mobile phone / electromagnetic / high frequency interference)
- Controls: On/Off LED and Switch with electronic touch
- Batteries: 2x 1.5V AA-Type alkaline
- Power adapter (included): Input 110-240Vac 50-60Hz / Output 12V - 500mA ("+" = Central; "-" = Ring)
- Input Connector: 0.63" (16mm) CESS Aviation 3 pins with thread (balanced)
- Output Connector: 3-Pin XLR output connector (balanced)
- Cables: 3-Pin XLR Female to 3-Pin XLR Male, 5m length
- Microphone Size: 400 x Ø17 (157.48" x Ø6.69")
- Wind-screen Size: 127 x Ø28 (5" x Ø1.1")
- Base Size: 124 x 142 x 48 mm (55.9" x 48.82" x 18.9")
- Microphone Weight: 70g (2.47oz.)





## Gooseneck Cardioid

### STILE 350H

Cardioid Gooseneck Microphone – 35cm length, Black

code J544J

STILE 350H Mini-shotgun Cardioid Microphone deliver high-level performance, control, and flexibility for meetings and conferences. Its high-quality cartridge with cardioid polar pattern delivers good control in difficult acoustic conditions. The result is superior voice capture and lower pickup of room noise compared to other standard cardioid gooseneck microphones. The bend at bottom allows precise placement in meetings and conferences.

#### Features

35 cm (13.78 inch) length, black finish  
Designed for high-quality sound capture in meetings and conferences  
50m Reference sound-receiving distance  
Gooseneck bend at bottom  
Phantom Power from +48V to +52V  
Foam windscreen included  
Works with STILO B200/S mic bases

#### Specifications

- Element: Condenser (Back Electret)
- Polar pattern: Cardioid
- Gooseneck length: 350mm
- Reference sound-receiving distance: 50cm
- Frequency response: 50Hz - 20kHz
- Sensitivity: -43 dB  $\pm$  1 dB (0dB=1V/Pa @ 1kHz)
- Output Impedance: 600 $\Omega$
- Max input SPL: 123 dB (1 kHz @ 1% T.H.D)
- Phantom power requirement: +48V ~ +52DC, 3 mA typical
- Microphone Size: 350 x  $\varnothing$ 12 mm
- Wind-screen Size: 150 x  $\varnothing$ 22 mm
- Microphone Weight: 60g
- Packing Size: 397 x 68 x 33,8 mm



## Gooseneck Cardioid

### STILE 450

Cardioid Gooseneck Microphone – 45cm length, Black

code J541J

STILE 450-550 Series Goose-neck Microphones deliver high-level performance, control, and flexibility for meetings and conferences. High quality cartridges with cardioid polar pattern deliver accurate voice capture with minimum pickup of room noise. Dual bend at bottom and top allow precise placement in meetings and conferences. A choice of 45 cm (17.7 inch) and 55 cm (21.6 inch) lengths, with or without on/off switch, match different table dimensions or seating configurations.

#### Features

45 cm (17.7 inch) length, black finish  
Designed for high-quality sound capture in meetings and conferences  
Reference sound-receiving distance 30-40 cm  
Gooseneck bends at bottom and top  
+48V Phantom Power  
Foam windscreen included  
Works with STILO B200/S mic bases

#### Specifications

- Element: Condenser (Back Electret)
- Polar pattern: Cardioid (Direzionale)
- Reference sound-receiving distance: 30-40 cm
- Frequency response: 50Hz-18kHz
- Sensitivity: -45dB (1v @ 1pa)
- Impedance: 600ohms
- Max input SPL: 123dB (1kHz @ 1% T.H.D)
- S/N ratio: 70dB, 1kHz @ 1pa
- Phantom power requirement: +48V ~ +52DC
- Microphone Size: 450 x  $\varnothing$ 19 mm
- Microphone Weight: 120g
- Wind-screen size: 40 x  $\varnothing$ 32mm
- Packing Size: 500 x 30 x 30 mm





# Gooseneck Cardioid

## STILE 500/550S Cardioid Gooseneck Microphones

STILE 450-550 Series Goose-neck Microphones deliver high-level performance, control, and flexibility for meetings and conferences. High quality cartridges with cardioid polar pattern deliver accurate voice capture with minimum pickup of room noise. Dual bend at bottom and top allow precise placement in meetings and conferences. A choice of 45 cm (17.7 inch) and 55 cm (21.6 inch) lengths, with or without on/off switch, match different table dimensions or seating configurations.

### Features

55 cm (21.6 inch) length, black finish  
Designed for high-quality sound capture in meetings and conferences  
Reference sound-receiving distance 30-40 cm  
Gooseneck bends at bottom and top  
+48V Phantom Power  
Foam windscreen included  
Works with STILO B200/S mic bases

### Specifications

- Element: Condenser (Back Electret)
- Polar pattern: Cardioid (Direzionale)
- Reference sound-receiving distance: 30-40 cm
- Frequency response: 50Hz-18kHz
- Sensitivity: -45dB (1v @ 1pa)
- Impedance: 600ohms
- Max input SPL: 123dB (1kHz @ 1% T.H.D)
- S/N ratio: 70dB, 1kHz @ 1pa
- Phantom power requirement: +48V ~ +52DC
- Microphone Size: 550 x Ø13mm
- Microphone Weight: 130g
- Wind-screen size: 40 x Ø32mm
- Packing Size: 600 x 30 x 30mm

J540J	STILE 550	Cardioid Gooseneck Microphone – 55cm length, Black
J542J	STILE 550S	Cardioid Gooseneck Microphone with Switch – 55cm length, black
J543J	STILE 550S-WH	Cardioid Gooseneck Microphone with Switch – 55cm length, White



# Gooseneck Universal Base

## STILE B200S Gooseneck Microphone Universal Base with On-Off Button

code J547J

STILE B200S is a universal base for gooseneck microphones designed for positioning on tables or desks. It weighs 410g (14.46oz.) and assures high stability even in case of accidental bumps against the microphone. The base is equipped with an On/Off switch with green light. It accepts external +48V Phantom power coming from the output audio cable to power condenser microphone capsules.

### Features

Designed for high stability of gooseneck microphone placement  
410g (14.46oz.) heavy base  
Balanced XLR Input and Output Connectors  
On-Off button with Led  
+48V External Phantom Power

### Specifications

- External Phantom Power: +48V
- Controls: On/Off Switch with LED
- Input/Output Connectors: 3 pins XLR (balanced)
- Size: 112 x 150 x 43 mm
- Weight: 0,41 kg (batteries not included)
- Packing Size: 205 x 156 x 60 mm



## STILE B200P Gooseneck Microphone Universal Base with Push-to-Talk Button

code J548J

STILE B200P is a universal base for gooseneck microphones designed for positioning on tables or desks. It weighs 410g (14.46oz.) and assures high stability even in case of accidental bumps against the microphone. The base is equipped with a Push-to-Talk button, which activates the microphone only when pressed, and green light. It accepts external +48V Phantom power coming from the output audio cable to power condenser microphone capsules.

### Features

Designed for high stability of gooseneck microphone placement  
410g (14.46oz.) heavy base  
Balanced XLR Input and Output Connectors  
Push-to-Talk Button with Led for quick announcements  
+48V external Phantom Power

### Specifications

- External Phantom Power: +48V
- Controls: Push-to-Talk Button with LED
- Input/Output Connectors: 3 pins XLR (balanced)
- Size: 112 x 150 x 43 mm
- Weight: 0,41 kg (batteries not included)
- Packing Size: 205 x 156 x 60 mm





## CRYSTAL SERIES

The Crystal Series completes the gamma of solutions that Helvia has to offer to the AVL professionals. The need to have a clean video, free from uncomfortable reflections, modular and compact, finds in the LED screens the weapon of choice for contractors and rentals all over the world.

### HLV-391

LED module for composite screens 3.91 mm pitch

code J260J

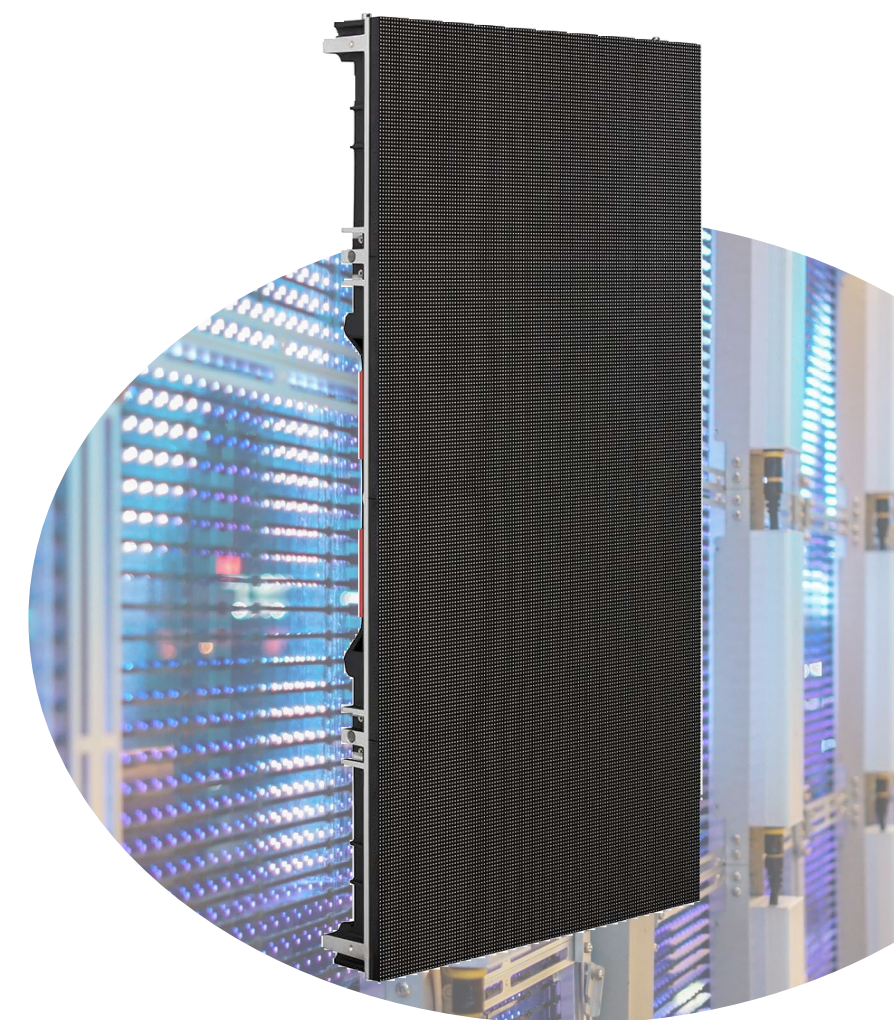
The HLV-391 is the right choice for the applications that require a clear and intelligible, but also easy to install and durable in time, video output. The Nationstar 1921 LEDs have become a quality standard for the category and the attention to detail, an all-italian feature, makes The Crystal Series completes the gamma of solutions that Helvia has to offer to the AVL professionals. The need to have a clean video, free from uncomfortable reflections, modular and compact, finds in the LED screens the weapon of choice for contractors and rentals all over the world. The HLV-391 is the right choice for the applications that require a clear and intelligible, but also easy to install and durable in time, video output. The Nationstar 1921 LEDs have become a quality standard for the category and the attention to detail, an all-italian feature, makes the HLV-391 ideal for the toughest situations. With a 140° angle of dispersion HLV-391 is not afraid of large areas, from the conference room to the city square. Available with IP65 treatment for external use and in the Mountain and Beach solutions, with optimized power supplies for the most extreme environments.

#### Features

- LED Module pitch 3.91 mm for indoor and outdoor use
- Sturdy and easy to install
- Aluminum frame

#### Specifications

- Pixel Pitch: 3.91mm
- LED Type: Nationstar 1921
- LED Configuration: SMD 3in1 RGB
- Brightness: 6000nits/sqm (automatic)
- Pixel Density: 65.536 pixrls/sqm
- Module Size: W250mm x H250mm x D100mm
- Number of Tiles per Module: 2x4
- Cabinet Size: W500mm x H1000mm
- Pixels per Tile: 128x256 dots
- Cabinet Area: 0,5sqm
- Cabinet Weight: 14,5 Kg
- Recommended Viewing Distance: >3m
- Cabinet Material: Die-Cast Aluminum
- Maintenance: Back
- Viewing angle: 140°
- Color temperature: 2000-9300K
- LED Lifetime: >100.000 hrs
- Defect Rate: 1/10.000 pixels
- Contrast Ratio: 5000:1
- Input Power (Max): 500W/sqm
- Input Power (Typical): 250W/sqm







## LED Screens

### HLV-250

LED module for composite screens 2.50mm pitch

code J262J

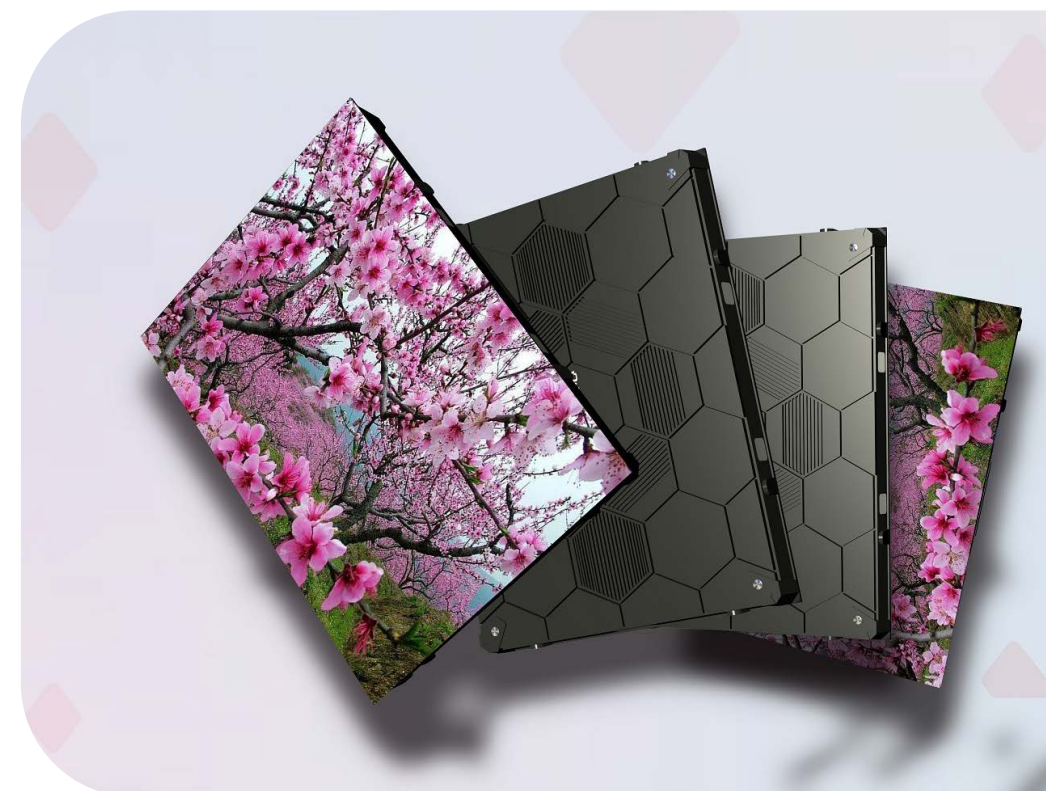
The Crystal Series completes the gamma of solutions that Helvia has to offer to the AVL professionals. The need to have a clean video, free from uncomfortable reflections, modular and compact, finds in the LED screens the weapon of choice for contractors and rentals all over the world. The HLV-250 module is the perfect choice for all those applications that require the best visual intelligibility even at small distances. The Nationstar 2121 LED has become a quality standard for all the professional in the field and grants the reliability and safety that every installation, fixed or not, requires. The reduced pitch and the incredible energetic performances make the HLV-250 a simple and reliable solution. The die-cast aluminum frame reduces the weight of the single module and the magnetic front inspection grants access to the system without the need to disassemble the structure, saving both time and money.

#### Features

- LED Module pitch 2.5mm for indoor use
- Sturdy and easy to install
- Magnetic Front Access
- Aluminum frame

#### Specifications

- LED Type: NATIONstar 2121 3 in 1 RGB
- Pixel per cabinet: 256 x 192
- Brightness: 6000nits/sqm (automatic)
- Module Size: W640mm x H480mm x D58mm
- Number of Tiles per Module: 2x3
- Cabinet Area: 0.3sqm
- Cabinet Weight: 7.5Kg
- Recommended viewing distance: >2m
- Cabinet Material: Aluminum
- Maintenance: Front
- Viewing Angle: 160°
- Color Temperature: 2500-10000K
- LED Lifetime: >100000 Hrs
- Defect Rate: 1/10000 pixels
- Contrast Ratio: 5000:1
- Input Power (max): 360W/sqm
- Input Power (typical): 120W/sqm





## Poster Display

Helvia LED Poster Display makes your ads or informations be eye-catching and is widely installed in retail stores, shopping mall, hotel halls and at important entertainment or conference centers. Thin and elegant design allow placement everywhere. It offers multiple control ways: wifi and wired network plus USB. Contents can be managed fast and easy from any PC or Mac, iPad or iPhone, Android tablet and smartphone. Remote cloud control is also available. Helvia Led Poster can be simply placed at floor or installed permanently at ceiling or wall through available optional accessories and stands. This display is also ideal for outdoor applications because of its brightness.

### HLN-POS1.8

#### Set of 2 Digital Indoor Led Poster P1.8 with stand and flight case

code J681J

##### Features

- Easy setup and control onboard or remote
- Wifi Enabled
- Thin Design and lightweight
- Can be managed by remote cloud
- Great marketing tool for rental and fixed install
- Designed for Indoor use and Outdoor use thanks to its high brightness
- Novastar Controller and player inside
- Support Playback of images and video in MP4,AVI,WMV with audio reproduction via internal speaker

##### Specifications

- Pixel Pitch: 1,8mm
- Display Resolution: 320\*1080p
- OS: Android 7.2 / Built-in Novastar controller and player
- Color Depth: 14 bits
- Refresh rate: >2880 Hz
- Contrast ratio: 4000 / 1
- Brightness: 480-800 NITS adjustable
- Viewing Angle: 160°x160°
- Control/Software: Ethernet/USB/wifi by Novastar LCT / ViPlex Express / ViPlex Handy
- Supported video format: MP4,AVI,WMV - audio playback via internal speaker
- AC Input Voltage: AC110-240V 50-60Hz
- Max Power Consumption: 570 watt
- Average Power Consumption: 190 watt
- Working Temperature: 0-40°C
- Lifespan: = 100000 hours
- Dimensions: 586 x 1954 x 35 mm
- Weight: 38,40 Kg



## Poster Display

### HLN-POS2.5

#### Set of 2 Digital Indoor Led Poster P2.5 with stand and flight case

code J677J

Helvia LED Poster Display makes your ads or informations be eye-catching and is widely installed in retail stores, shopping mall, hotel halls and at important entertainment or conference centers. Thin and elegant design allow placement everywhere. It offers multiple control ways: wifi and wired network plus USB. Contents can be managed fast and easy from any PC or Mac, iPad or iPhone, Android tablet and smartphone. Remote cloud control is also available. Helvia Led Poster can be simply placed at floor or installed permanently at ceiling or wall through available optional accessories and stands. This display is also ideal for outdoor applications because of its brightness.

##### Features

- Easy setup and control onboard or remote
- Wifi Enabled
- Thin Design and lightweight
- Can be managed by remote cloud
- Great marketing tool for rental and fixed install
- Designed for Indoor use and Outdoor use thanks to its high brightness
- Novastar Controller and player inside
- Support Playback of images and video in MP4,AVI,WMV with audio reproduction via internal speaker

##### Specifications

- Pixel Pitch: 2,5mm
- Display Resolution: 224\*756p
- OS: Android 7.2 / Built-in Novastar controller and player
- Color Depth: 14 bits
- Refresh rate: >2880 Hz
- Contrast ratio: 4000 / 1
- Brightness: 480-800 NITS adjustable
- Viewing Angle: 160°x160°
- Control/Software: Ethernet/USB/wifi by Novastar LCT / ViPlex Express / ViPlex Handy
- Supported video format: MP4,AVI,WMV - audio playback via internal speaker
- AC Input Voltage: AC110-240V 50-60Hz
- Max Power Consumption: 570 watt
- Average Power Consumption: 190 watt
- Working Temperature: 0-40°C
- Lifespan: = 100000 hours
- Dimensions: 586 x 1954 x 35 mm
- Weight: 38,40 Kg





Helvia SIGNUM series is a line of cables, connectors and adapters engineered and designed to meet the specifications required by contractors, system integrators and show industry professionals ranging from microphone cables to fire retardant, speaker and network cables, built with premium quality technologies and satisfying all the certifications required by the residential and commercial field.

**SM-LS2255-100G**  
Low smoke speaker cable reel (100 mt)

code J438J

**Features**

Low smoking, zero halogen and flame retardant, suitable for permanent installation in places with specific security condition  
Flexible, small diameter, compact structure: easy for use in building conduits  
Applications: Fixed installation in building services engineering, Hi-Fi system wiring  
Grey  
Length: 100 mt



**Specifications**

- Jacket diameter: 8.5 mm
- AWG: 14
- No. of inner conductors: 2 x 2.5 mm<sup>2</sup>
- Copper strand per conductor: 80 x 0.20 mm
- Conductor insulation PE 3.2 mm
- Temperature range: -40 °C / 105 °C
- Packaging: 100 mt roll

**SM-LS2405-100G**  
Low smoke speaker cable reel (100 mt)

code J439J

**Features**

Low smoking, zero halogen and flame retardant, suitable for permanent installation in places with specific security condition  
LSHZ jacket and inner conductors twisting grant perfect and easy winding  
Applications: All types of sound systems, permanent installations, HiFi-systems wiring, Mobile outdoor areas  
Grey  
Length: 100 mt



**Specifications**

- Jacket diameter: 11 mm
- AWG: 12
- No. of inner conductors: 2 x 4.0 mm<sup>2</sup>
- Copper strand per conductor: 80 x 0.25 mm
- Conductor insulation LLDPE 4.0 mm
- Temperature range: -40 °C / 105 °C
- Packaging: 100 mt roll

**SM-LS205M-100G**  
Low smoke microfone cable reel (100 mt)

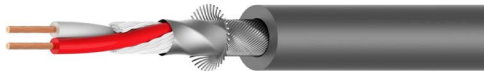
code J440J

**Features**

Low smoking, zero halogen and flame retardant, suitable for permanent installation in places with specific security condition  
Optimal transmission quality ensured by large wire diameter of 2 x 0.50 mm<sup>2</sup> and 100% shielding  
Flexible and easy to wind  
Applications: broadcasting and building installations, professional studio technology, large stages  
Color: Grey

**Specifications**

- Jacket diameter: 6.8 mm
- AWG: 20
- No. of inner conductors: 2 x 0.50 mm<sup>2</sup>
- Copper strand per conductor: 28 x 0.15 mm
- Conductor insulation PE 1.65 mm
- Temperature range: -40 °C / 105 °C
- Shielding factor: 100% (tin plated copper spiral, 80 x 010 mm + AL fleece)



**SM-FRC5-100BL**  
Flame Retardant CAT5e cable reel (100 mt)

code J441J

**Features**

Flame Retardant and zero halogen, suitable for permanent installation in places with specific security condition  
Highly flexible CAT5e data cable down to -40 °C  
S/UTP (braided shielding + unshielded twisted pairs)  
Very robust TPE jacket  
EtherSound up to 70m



**Specifications**

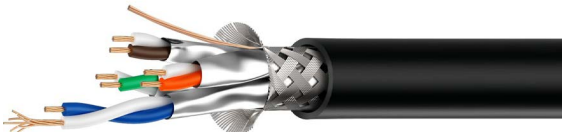
- Jacket diameter: 6.4 mm
- AWG: 26
- No. of inner conductors: 4 x 2 x 0.15 mm<sup>2</sup>
- Copper strand per conductor: 19 x 0.10 mm
- Conductor insulation HDPE
- Temperature range: -40 °C / 85 °C
- Shielding factor: 90% (tin plated copper spiral, 128 x 010 mm tin copper)

**SM-FRC6-300B**  
Flame Retardant CAT6e cable reel (300 mt)

code J442J

**Features**

Flame Retardant and zero halogen, suitable for permanent installation in places with specific security condition  
Highly flexible due to special stranded wire technology and TPE jacket  
Great durability, outdoor temperature resistant, easy to wind  
Large wire cross-section AWG24 for long distance use up to 70m  
Foam-skin PE insulation and shielded in pairs with an AL foil



**Specifications**

- Jacket diameter: 8 mm
- AWG: 24
- No. of inner conductors: 4 x 2 x 0.22 mm<sup>2</sup>
- Copper strand per conductor: 7 x 0.20 mm
- Conductor insulation 1.3 ± 0.05 mm
- Temperature range: -40 °C / 60 °C
- Shielding factor: 100% (braided shielding, 128 x 012 + AL/PT foil + drain wire 7 x 02 mm)

**SM-SCB-CAT5**  
CAT5e cable reel - 50 mt

**Features**

Flame Retardant and Halogen free cable  
S/UTP (braided shielding + unshielded twisted pairs)  
Highly flexible with very robust TPE jacket  
EtherSound up to 70m  
Professional cable drum, made from robust PC (Polycarbonate) with integrated handle/brake and detachable cable feeder. Light weight, crush resistance, resistance to fall off, not easy to deformation, oil resistance, anti-UV.

**Specifications**

- Jacket diameter: 6.4 mm
- AWG: 24
- No. of inner conductors: 4 x 2 x 0.51 mm
- Shielding factor: 90 % (Shielding Tin copper braided shielding with 128 x 0.10 mm Tin copper)
- Conductor insulation HDPE
- Temperature range: -40 °C / 85 °C

J405J	SM-SCB-CAT5-50	50 mt long
J406J	SM-SCB-CAT5-70	70 mt of length





## SM-C5ET Flame Retardant CAT5e Ethercon cable

### Features

Flame Retardant and Halogen free cable with Ethercon plug  
S/UTP (braided shielding + unshielded twisted pairs)  
Highly flexible with very robust TPE jacket  
EtherSound up to 70m  
Ethercon plug

### Specifications

- Jacket diameter: 6.4 mm
- AWG: 24
- No. of inner conductors: 4 x 2 x 0.51 mm
- Shielding factor: 90 % (Shielding Tin copper braided shielding with 128 x 0.10 mm Tin copper)
- Conductor insulation HDPE
- Temperature range: -40 °C / 85 °C

<b>J402J</b>	SM-C5ET-150	1.50 mt Length	Plug: Ethercon
<b>J401J</b>	SM-C5ET-060	0.60 mt Length	Plug: Ethercon
<b>J400J</b>	SM-C5RJ-150	1.50 mt Length	RJ45 plug: CAT5e, 150MHz, max. AWG26
<b>J399J</b>	SM-C5RJ-060	0.60 mt Length	RJ45 plug: CAT5e, 150MHz, max. AWG26



## SM-HDMI-4K Signum seires HDMI 2.0 professional cable

### Features

18Gbps TMDS (Transition-minimized Differential Signaling) max speed  
Support 4K resolution (3840 × 2160 pixels) and 60FPS frame rate  
Support Rec.2020 Color Space standard, Dual View, 4:2:0 Chroma subsampling  
Support up to 32 audio channels @ 1536kHz sampling rate, and up to 4 audio streams  
HDR (High-Dynamic-Range) imaging, for greater range of luminosity  
Compatible with BT.2020 standard (ultra-high definition TV) with 10bit depth samples  
Support HDCP2.2 protocol (High-bandwidth Digital Content Protection)  
Also support 21/9 aspect ratio, HE-AAC and DRA audio standards, dynamic auto lip-sync, improved 3D capabilities, and additional CEC functions

### Specifications

- Max. Transmission Speed: 18Gbps
- Supported Standards: 4K, Dual View, 32 audio channels, HDR imaging, BT.2020, HDCP2.2 Protocol, and others
- Regulation Compliance: UL94, CE

<b>J522J</b>	SM-HDMI-4K-500	Length: 5m
<b>J523J</b>	SM-HDMI-4K-1000	Length: 10m
<b>J524J</b>	SM-HDMI-4K-2000	Length: 20m



## SM-ETHC-D Ethercon socket class D

code J436J

### Features

CAT5e "D" type socket  
TIA/EIA 568-C.2 and ISO/IEC11801 complying  
Front and rear mountable accommodates any RJ45 plug and XLR type RJ45 plug  
Front and rear mountable  
Vertical PCB version terminals

### Specifications

- Shell: Zinc alloy diecast
- Insert: PA6
- Contacts: Gold plated bronze



## SM-PWCT Powercon Thru socket

code J433J

### Features

Fast and easy twist lock system, ideal for LED screen, lighting and many other equipments  
Dust and water resistant (IP65)  
Flame retardant  
Extremely robust and reliable glass fiber composite construction

### Specifications

- Housing: PA6 30% GR
- Contacts: Brass
- Contacts plating: Silver



## SM-C5RJ-PH CAT5e RJ45 plug with protective housing

code J434J

### Features

Plug Type - CAT5e RJ45  
Metal cable clamp holder for drain wire  
Wire core Load bar easy for assembly  
Nylon protective housing with special designed cable clamping system (suitable for max. cable diameter 6.8 mm)

### Specifications

- Protective housing: PA6
- Contacts: Gold plated Bronze
- RJ45 plug CAT5e, 150MHz, max. AWG26



## SM-ETHC Ethercon socket

code J435J

### Features

CAT5e feed through socket CAT5e  
TIA/EIA 568-C.2 and ISO/IEC11801 complying  
Front and rear mountable accommodates any RJ45 plug and XLR type RJ45 plug  
Grounded version

### Specifications

- Shell: Zinc alloy diecast
- Insert: PA6
- Contacts: Gold plated bronze



## SM-PWCT-S Powercon Thru socket

code J432J

### Features

Fast and easy twist lock system, ideal for LED screen, lighting and many other equipments  
Dust and water resistant (IP65)  
Flame retardant  
Extremely robust and reliable glass fiber composite construction

### Specifications

- Housing: PA6 30% GR
- Contacts: Bronze
- Contacts plating: Silver



## SM-PM-CAT5F CAT5e panel mount receptable F

code J403J

### Features

D-size feed through chassis RJ45 adapter designed for CAT5e  
Grounded version

### Specifications

- Shell: Zinc alloy diecast
- Insert: PA6 30% GR
- Contacts: Gold plated bronze







*helviasystems.com*

HELVIA® is a registered trademark of FRENEXPORT SPA - Italy  
HELVIA® è un marchio di fabbrica registrato di FRENEXPORT SPA - Italy

